



2004
Comprehensive Annual
Financial Report

Houston Firefighters' Relief and Retirement Fund
Houston, Texas

2004



A Component Unit of the City of Houston for the Fiscal Year Ended June 30, 2004



Section 1
Introduction

INTRODUCTION



Fiscal Year Ended June 30, 2004

Table of Contents

Section 1 — Introduction

Letter of Transmittal	2-4
Certificate of Achievement for Excellence in Financial Reporting	2
Administrative Organization	5
Financial Statement Preparation	6

Section 2 — Financial Information

Independent Auditors' Report	8
Management's Discussion and Analysis	9-11
Basic Financial Statements	
Statements of Plan Net Assets	12
Statements of Changes in Plan Net Assets	13
Notes to Basic Financial Statements	14-19
Required Supplemental Schedules	
Schedule of Funding Progress (unaudited)	20
Schedule of Employer Contributions (unaudited)	20
Note to Required Supplemental Schedules (unaudited)	20
Additional Supplemental Schedules	
Investment, Professional Services and Administrative Expenses	21
Summary of Investment and Professional Services	22-23

Section 3 — Investment Information

Report of the Chief Investment Officer	25
Outline of Investment Policies	25-26
Investment Holdings Asset Allocation	26
Investment Results	27-29
Investment Holdings Summary	30
2004 Brokerage Commissions	31
Commission Recapture Program	32

Section 4 — Actuarial Information

An Overview of the Actuarial Valuation	34
Actuary's Certification	35
Summary of Actuarial Assumptions and Methods	36-37
Member Data	38
Solvency Test	39
Analysis of Financial Experience	39
Summary of Plan Provisions	40-42

Section 5 — Statistical Information (unaudited)

Revenues by Source	44
Expenses by Type	44
Benefit Expenses by Type	45
Retired Members by Type of Benefit	45
Average Monthly Benefit Payments for Service Retirements	46
Glossary	47-48

LETTER OF TRANSMITTAL

Houston Firefighters' Relief and Retirement Fund



Investing for Firefighters and Their Families.

4225 Interwood N. Parkway
Houston, Texas 77032-3866
281.372.5100 Tel
281.372.5101 Fax
1.800.666.9737
www.hfrf.org

BOARD OF TRUSTEES

Donny R. Myers
Chair

Tommy R. Shelton
Vice Chair

George E. Lowdermilk
Secretary

Philip B. Scheps, Ph.D.
Treasurer

Jerry A. Besselman
Member

Jimmie L. Gill
Member

V.E. Rogers
Member

Honorable Helen Huey
Citizen Member

Albertino Mays
Citizen Member

Risé J. Montrell
Mayor's Representative

Maxie L. Patterson
Executive Director

October 7, 2004

Philip B. Scheps, Ph.D.
Treasurer

City of Houston

P. O. Box 1562

Houston, Texas 77251-1562

Dear Dr. Scheps:

The Comprehensive Annual Financial Report (CAFR) of the Houston Firefighters' Relief and Retirement Fund (the Fund), a component of the City of Houston, for the fiscal year ended June 30, 2004, is submitted herewith.

The Houston Firefighters' Relief and Retirement Fund was created in 1937 with the passage of a state law that provided benefits for firefighters in certain cities in Texas. In 1975, Article 6243e.2 was passed in the Texas legislature to create a fund for firefighters in cities with a population not less than 1.2 million. This statute was amended in 1997 into Article 6243e.2(1). Since that time, and currently, Article 6243e.2(1) governs only firefighters employed by the City of Houston. Firefighters in the City of Houston are not covered by Social Security.

Article 6243e.2(1) states that a fund shall be created to provide retirement, disability and death benefits for firefighters and their beneficiaries, and that it shall be governed by a Board of Trustees, which has sole responsibility for its maintenance. In earlier years, the City of Houston provided staff and financing for the daily administration of the Fund. Effective July 1, 1988, the Board of Trustees assumed full responsibility for its administration. Administration of the Fund includes accurately computing and disbursing retirement benefits, receiving and depositing contributions in a timely manner, accounting for investment activity, monitoring the activity of all external investment managers, auditing all financial activities of the Fund on an ongoing basis, and meeting reporting requirements in a timely manner.

Responsibility for the accuracy of the data and the completeness and fairness of the presentation, including all disclosures, rests with the Board of Trustees. To the best of the Board's knowledge and belief, the enclosed information is accurate in all material respects and is reported in a manner designed to present fairly the financial position and results of Fund operations. All disclosures necessary to enable the reader to gain an understanding of the financial activities of the Fund have been included.

The report consists of five sections:

Section 1 — Introduction contains this Letter of Transmittal and identification of the administrative organization and professional services utilized by the Fund;

Section 2 — Financial Information contains the opinion of the independent certified public accountants (auditors) and the financial statements of the Fund, which include the Management's Discussion and Analysis section;

Section 3 — Investment Information describes investment goals and policies, asset allocation, investment results, and other information;

Section 4 — Actuarial Information contains the independent consulting actuary's opinion and results of the July 1, 2001, actuarial valuation; and

Section 5 — Statistics (unaudited) contains statistical tables of other significant data pertaining to the Fund.



LETTER OF TRANSMITTAL *(continued)*

MILESTONES AND MAJOR INITIATIVES

During fiscal year 2004, the Fund achieved several milestones. Listed below are several milestones from the member services and investment teams.

Member Services Milestones

Several benefit enhancements went into effect on September 1, 2003. They include:

- Minimum and maximum annual DROP interest crediting rates of 5 percent and 10 percent, respectively;
- Elimination of the 1 percent administrative fee for Fund maintenance of DROP accounts for retired DROP members; and
- Ability for a surviving spouse of a deceased member to leave DROP balances with the Fund.

Also effective September 1, 2003, the firefighters' contribution rate increased to 8.35 percent (an additional increase to 9.0 percent to be effective July 1, 2004). The City contributes twice the firefighters' contribution rate.

During the fiscal year, the Fund implemented a Web calculator, which provides easy access to important forms and additional flexibility for our active members to obtain information regarding available pension benefits at any time, in the comfort of their own homes.

Investment Milestones

Fiscal year 2004 turned out to be an outstanding year for the Fund. The Fund returned 18.4 percent on its investment assets. This return placed the Fund in the 11th percentile for a one-year period and in the 25th percentile over a 10-year period of public pension plans as measured by the Trust Universe Comparisons Service (TUCS) Report produced by Russell Mellon. Once again, the Fund's strong performance can be attributed to the disciplined contrarian investor philosophy.

Specifically, the outperformance can be attributed to small capitalization domestic stocks, international stocks (both developed and emerging markets) and private equity investments. All three of those categories returned greater than 20 percent during the year.

The Board of Trustees made some significant changes during the year to the international equity asset class. First, the decision was made to terminate an underperforming international manager (Schroders, North America) and to hire McKinley Capital Management as a replacement. Second, a decision was made to convert the passively managed S&P500 mandate into an active strategy; Victory Capital Management was selected for that assignment. The Board decided to neutralize the small- and mid-capitalization exposure and rewarded Ariel Capital an additional \$42.5 million to manage in a mid-cap value mandate; the assets were moved from the AllianceBernstein small-cap value portfolio. Also, during the year the Board decided to add a currency management strategy to the allocation. Two managers were hired: State Street Global Advisors to manage a currency overlay portfolio and FX Concepts to manage a currency alpha portfolio.

Finally, a new direct investment capital commitment was made to Timberland Investment Resources (TIR), who also was hired to manage two timber/real estate portfolios, previously managed by Wachovia/Evergreen Timberland Group.

ADMINISTRATION, STAFF AND PROFESSIONAL SERVICES

At fiscal year-end, the Fund staff was made up of 24 employees.

The following professionals were employed by the Board of Trustees as of June 30, 2004, to provide specialty services. The custodian bank is Mellon Trust. Mir•Fox & Rodriguez, P.C. serves as the auditor. Mellon Human Resources & Investor Solutions is the actuary. Strasburger & Price, LLP, serves as legal counsel. Pension Consulting Alliance is the investment consultant.

All investment consultants of the Fund acknowledge that they serve in a fiduciary capacity to the Fund. Most of the professional consultants appointed by the Board are listed on page 5 of this report. Other professionals employed by the Board are listed on page 22.

ACCOUNTING SYSTEMS AND REPORTS

As plan administrator of the Fund, the Board of Trustees maintains the following various internal controls to ensure material accuracy of all data:

- Biweekly control reports are generated by the Fund staff to ensure the accuracy of employee and employer contributions received from the City of Houston;
- Monthly reconciliations are performed on benefit payment information to confirm payment instructions to the custodian bank;
- Monthly reviews are performed on all investment transactions to ensure that dividends and interest on the investments of the Fund are properly credited, all assets are accounted for properly, all market valuations are appropriate, and each investment manager is in compliance with established guidelines;
- The checking account of the Fund, from which administrative payments are made, is reconciled monthly by the staff and wire transfers from the custodian bank are reconciled monthly to the in-house cash account;
- The Budget and Audit Committee of the Board of Trustees, which sets general parameters for spending, meets at least quarterly to review administrative and investment expenditures; and
- The Personnel and Procedures Committee formulates and reviews all procedures of the Fund. The auditor of the Fund reviews these internal controls annually. In turn, the auditor makes a report to the Board. If needed, the Board makes changes in the systems and controls of the Fund.

LETTER OF TRANSMITTAL *(continued)*

The financial statements included in this report have been prepared in accordance with generally accepted accounting principles (GAAP) and the principles of governmental accounting and reporting pronounced by the Governmental Accounting Standards Board (GASB). The accrual basis of accounting is used to record assets, liabilities, revenues and expenses. Revenues for the Fund are taken into account when earned without regard to date of collection. Expenses are recorded when the corresponding liabilities are incurred, regardless of when payment is made. For an overview of the financial position of the fund, please refer to the Management's Discussion and Analysis in the financial section.

Contributions to the Fund are based on the principles of level cost financing, with current services financed on a current basis and prior services amortized over a 30-year rolling period. The Fund has ended its fiscal year on June 30 since 1984. The Independent Auditors' Report from a certified public accountant and certification from the actuary of the Fund are included in this report.

INVESTMENTS

The investment portfolio is a major contributor to the Fund. The Board of Trustees created the Investment Committee, consisting of the whole Board, to oversee the investment portfolio, managers and performance of the Fund. With assistance from the Fund's professional staff, the Investment Committee monitors current investments, as well as potential investment opportunities, in light of changing economic conditions, and evaluates the possible impact on the Fund.

The overall goal of the Board's investment program is to provide sufficient investment returns necessary to pay timely and sufficient benefits to participants and their beneficiaries. Key components of the investment program that enable the Fund to achieve this goal are a diversified investment portfolio, a long-term investment outlook, and prudent risk-taking commensurate with fulfilling the goal of the program. The Fund's assets are invested in short-term instruments ("cash equivalents"), fixed-income securities, domestic and international equity securities, alternative investments, and real estate. By investing in different types of assets, the impact that a downturn in one asset class would have on the Fund is minimized and the probability that the Fund will earn an adequate rate of return is improved. The Board maintains an investment outlook that emphasizes stability and long-term planning — because payments to participants and beneficiaries are long-term in nature — and avoids drastic asset shifts and market timing decisions. The Board assumes prudent risk in the investment portfolio to ensure that assets grow at an adequate rate to provide promised benefits to participants and beneficiaries. By adhering to these components, the investment program is characterized by steady growth in ever-changing domestic and international economic environments.

The Fund must earn a return of 8.5 percent to be able to meet its benefits obligations. The Fund also models an overall goal of a 9.25 percent return on investments to cover operational expenditures, money management fees and capital expenditures.

INDEPENDENT AUDIT

An audit was performed by Mir•Fox & Rodriguez, P.C., for the fiscal year ending June 30, 2004, and was conducted in accordance with auditing standards generally accepted in the United States of America. The Independent Auditors' Report is included in this report.

CERTIFICATE OF ACHIEVEMENT

The Government Finance Officers Association (GFOA) of the United States and Canada awarded a Certificate of Achievement for Excellence in Financial Reporting to the Houston Firefighters' Relief and Retirement Fund, Houston, Texas, for its comprehensive annual financial report for the fiscal year ended June 30, 2003. This was the 21st year that the Fund has received this prestigious award. In order to be awarded a Certificate of Achievement, a government must publish an easily readable and efficiently organized comprehensive annual financial report. This report must satisfy both GAAP and applicable legal requirements.

A Certificate of Achievement is valid for a period of one year only. We believe that our current comprehensive annual financial report continues to meet the Certificate of Achievement Program's requirements, and we are submitting it to the GFOA to determine its eligibility for another certificate.

ACKNOWLEDGEMENTS

The compilation of this report reflects the combined effort of the Houston Firefighters' Relief and Retirement Fund staff under the leadership of the Board of Trustees. It is intended to provide complete and reliable information as a basis for making management decisions, as a means of determining compliance with legal provisions, and as a means of determining responsible stewardship for the assets contributed by the employee members and the City of Houston.

On behalf of the Board of Trustees, we would like to take this opportunity to express our appreciation to staff members, to the advisors, and to the many other professionals and participants who have worked so diligently to assure the successful operation of the Fund.

Sincerely,



Donny R. Myers
Chair



Maxie L. Patterson
Executive Director

ADMINISTRATIVE ORGANIZATION

Executive Director

Maxie L. Patterson

Deputy Director

Rhonda Scott Smith

Chief Investment Officer

Christopher E. Gonzales

General Counsel

Jonathan W. Needle

Director of Finance and Administration

Claudia McInnis

Director of Member Services

Glenna Hicks

Director of Technology and Building Services

John D. Moore II

Committees

Budget and Audit
 Investment
 Legislative
 Pension Benefits
 Personnel and Procedures

Actuary

Mellon Human Resources & Investor Solutions

Attorney

Strasburger & Price, LLP

Auditor

Mir•Fox & Rodriguez, P.C.

Custodian Bank

Mellon Trust

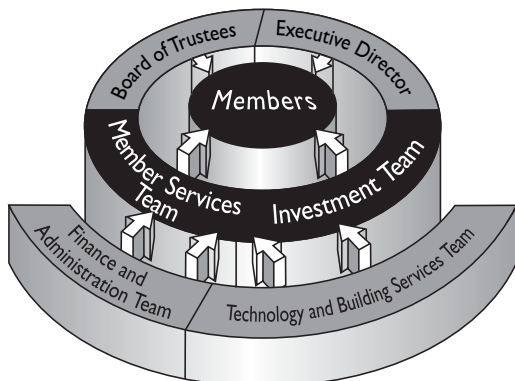
Investment Advisors

AllianceBernstein Institutional Investment Management
 Ariel Capital Management
 The Blackstone Group
 Brera Capital Partners, LLC
 Centennial Holdings
 Collier Investment Management Limited
 Energy Spectrum Capital, LP
 Energy Trust Capital, LP
 Energy Trust LLC
 FX Concepts
 Gulf Investment Management
 GW Capital, Inc.
 Hicks, Muse, Tate & Furst
 Hyperion Partners / Ranieri & Co, Inc.
 Industrial Growth Partners
 Kreate Management L.L.C. / Americus Real Estate Investments
 Landmark Partners
 Lexington Partners
 Lone Star Funds
 Loomis Sayles & Company
 Marvin & Palmer Associates, Inc.
 McKinley Capital Management, Inc.
 Mercator Asset Management
 The Mitchell Group
 PTC – Houston Management, LP
 Quantum Energy Management, LP
 RMK Timberland Group
 Scudder Emerging Markets
 Standish/Mellon Bond “S/STIF”
 State Street Global Advisors
 State Street Research & Management Co.
 STW Fixed Income Mgmt.
 TCW Shared Opportunity Funds
 Timberland Investment Resources, LLC
 Triad II Management Company, LP
 Victory Capital Management

Please see “Fees for Investment Services” on page 30.

Investment Consultant

Pension Consulting Alliance, Inc.



FINANCIAL STATEMENT PREPARATION

An Overview of Financial Statement Preparation

At the end of each fiscal year, the Board and staff members prepare financial statements showing the financial activity of the Fund. The financial statements include the statements of plan net assets and changes in plan net assets for the years presented. The notes are essential to the completeness of the information in the financial statements.

After the financial statements are prepared, an independent outside auditor hired by the Board reviews the systems and methods used to arrive at the information in the financial statements. A financial audit is then performed to determine if the financial statements are free of material misstatement. The audit includes examination, on a test basis, of evidence supporting the amounts and disclosures in the financial statements.

The audit is conducted in accordance with GAAS — generally accepted auditing standards. If the auditor finds the financial statements free of material misstatement, the auditor issues an opinion such as that found on page 8, stating that the statements fairly present the financial position of the Fund in accordance with GAAP — generally accepted accounting principles.

Some of the terms used in this section are defined in the glossary on pages 47–48.

Statements of Plan Net Assets

The statements of plan net assets are statements of the financial condition of the Fund that show snapshots of Fund assets and liabilities at a specific point in time. In this case, it's the end of the fiscal year on June 30, 2004 and 2003.

The statements show assets, liabilities and the remaining Fund balance. An asset is anything having commercial, economic or exchange value. Assets include cash, receivables (interest and dividends earned by the investments of the Fund and employee member and employer contributions), investments, collateral on securities lending arrangements, and land.

Fund liabilities include money reserved for members who are entitled to benefits and obligations for professional services the Fund has used — but for which payment has not been made.

Statements of Changes in Plan Net Assets

The statements of changes in plan net assets show the financial impact on the Fund of operations and investments during a period of time. In this case, it's the years ended June 30, 2004 and 2003.

Additions to plan net assets represent cash that came into, or is expected to come into, the Fund from events that take place during a fiscal year.

Additions include employee member and employer contributions and investment income. Investment gains are included because the increase (decrease) in market value of investments is shown as revenue since the investments are reported at market value.

Deductions from plan net assets represent the money that the Fund paid out or expects to pay out from events that take place during a fiscal year. Deductions include benefit payments to retirees and beneficiaries, refunds of contributions to firefighters who leave the Fire Department, and professional and administrative expenses.

This statement provides useful information about what happened during a single year. Retirement funds, however, operate with a long-term strategy (see “An Overview of the Actuarial Valuation” on page 34).

Changes in plan net assets at the end of the statement show the previous year's balance, plus revenues after expenses, to total the plan net assets held in trust for pension benefits at fiscal year-end.

Notes to Financial Statements

The notes are an integral part of the financial statements. The notes include any information that might be needed to have an adequate understanding of the overall financial status of the Fund.

In this report, the notes include explanations of the payment and refund features of the governing statute of the Fund, the accounting methods used by the Fund, the funding methods used, the methods and assumptions the actuary uses to determine contribution requirements, and any significant changes that take place after fiscal year-end — but before the audit is complete.

Supplementary Information

The supplementary six-year trend information provides additional historical information. These charts show the progress toward reaching the goal of being totally funded, as well as sources of revenues and types of expenses of the Fund during the fiscal year.

Other supplementary information provides additional information for analysis.



Section 2
Financial Information

FINANCIAL
INFORMATION



Fiscal Year Ended June 30, 2004

INDEPENDENT AUDITORS' REPORT

**Mir & Fox
Rodriguez, P.C.**
Certified Public Accountants

Member of the American Institute of Certified Public Accountants

Board of Trustees

Houston Firefighters' Relief and Retirement Fund:

We have audited the accompanying statements of plan net assets of the Houston Firefighters' Relief and Retirement Fund (the Fund) as of June 30, 2004 and 2003, and the related statements of changes in plan net assets for the years then ended. These basic financial statements are the responsibility of the Fund's management. Our responsibility is to express an opinion on these basic financial statements based on our audits.

We conducted our audits in accordance with auditing standards generally accepted in the United States of America. Those standards require that we plan and perform the audits to obtain reasonable assurance about whether the basic financial statements are free of material misstatement. An audit includes examining, on a test basis, evidence supporting the amounts and disclosures in the basic financial statements. An audit also includes assessing the accounting principles used and significant estimates made by management, as well as evaluating the overall basic financial statement presentation. We believe that our audits provide a reasonable basis for our opinion.

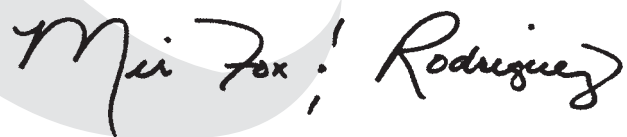
In our opinion, the basic financial statements referred to above present fairly, in all material respects, the financial status of the Fund as of June 30, 2004 and 2003, and the changes in financial status for the years then ended in conformity with accounting principles generally accepted in the United States of America.

Management's discussion and analysis (MD&A) and the required supplemental information (schedules 1 and 2) are not a required part of the basic financial statements but is supplementary information required by the Governmental Accounting Standards Board (GASB). We have applied certain limited procedures, which consisted principally of inquiries of management regarding the methods of measurement and presentation of the MD&A and required supplemental information. However, we did not audit such information and do not express an opinion on it.

Our audit was made for the purpose of forming an opinion on the basic financial statements taken as a whole. The additional supplemental information (schedules 3 and 4) are presented for the purpose of additional analysis and are not a required part of the Fund's basic financial statements. This information has been subjected to the auditing procedures applied in our audit of the basic financial statements and, in our opinion, is fairly stated in all material respects in relation to the basic financial statements taken as a whole.

The Board of Trustees and Fund management have elected not to present actuarial information on a biennial basis at a minimum as required by Governmental Accounting Standard Board to supplement the financial statements for 2004. The Board of Trustees and Fund management have elected to follow the required update of actuarial information as allowed by State of Texas statute, which is every three years. The supplemental information required by GASB does not affect the basic financial statements presented.

September 17, 2004



1900 One Riverway
Houston, TX 77056
713 622 1120
713 961 0625 Fax

MANAGEMENT'S DISCUSSION AND ANALYSIS

Management is pleased to present a discussion and analysis of the Houston Firefighters' Relief and Retirement Fund (the Fund) financial activity for the fiscal years ended June 30, 2004 and 2003. This discussion is intended to serve as an introduction to the Fund's basic financial statements which follow.

The financial statement section consists of:

(a) Basic financial statements, including the Statements of Plan Net Assets and Changes in Plan Net Assets. These statements reflect resources available for the payment of benefits and other expenses as of June 30, 2004, 2003 and 2002; and the fiscal year 2004, 2003 and 2002 additions to and deductions from the Fund.

(b) Notes to the basic financial statements which are an integral part of the basic financial statements. They include additional information that might be needed to have an adequate understanding of the overall financial status of the Fund.

(c) Required supplemental information and other supplemental schedules. These schedules provide additional information to the basic financial statements.

FINANCIAL HIGHLIGHTS

Plan Net Assets

	Fiscal Year 2004	Fiscal Year 2003	Fiscal Year 2002
<u>Assets:</u>			
Investments, at fair value	\$1,948,167,850	\$1,695,741,342	\$1,637,191,153
Capital assets (net of depreciation):			
Land and building	8,626,341	8,933,029	9,228,589
Furniture, fixtures and equipment	1,416,718	1,273,883	775,310
Other	968,504,725	245,558,145	133,634,490
Total assets	<u>2,926,715,634</u>	<u>1,951,506,399</u>	<u>1,780,829,542</u>
<u>Liabilities:</u>			
Short-term liabilities	945,830,229	228,262,024	120,664,577
Total net assets	<u>\$1,980,885,405</u>	<u>\$1,723,244,375</u>	<u>\$1,660,164,965</u>

The increase in plan net assets at the end of fiscal year 2004 and 2003 is due to improved market conditions.

Changes in Plan Net Assets

	Fiscal Year 2004	Fiscal Year 2003	Fiscal Year 2002
Beginning net assets	\$1,723,244,375	\$1,660,164,965	\$1,726,488,181
Additions to plan assets:			
Contributions	42,715,409	41,984,183	42,669,386
Net appreciation (depreciation) FV of investments	252,764,028	43,573,461	(101,151,952)
Interest income	38,617,796	48,917,175	53,151,937
Dividends	15,475,695	10,391,086	7,565,826
Other net income	(2,632,614)	(5,501,473)	(5,250,731)
Total additions (reductions)	<u>346,940,314</u>	<u>139,364,432</u>	<u>(3,015,534)</u>
Deductions from plan assets:			
Benefits	83,618,595	71,385,364	57,819,590
Other	5,662,689	4,899,658	5,488,092
Total deductions	<u>89,281,284</u>	<u>76,285,022</u>	<u>63,307,682</u>
Ending net assets	<u>\$1,980,903,405</u>	<u>\$1,723,244,375</u>	<u>\$1,660,164,965</u>
Net increase (decrease)	<u>\$257,659,030</u>	<u>\$63,079,410</u>	<u>\$(66,323,216)</u>

MANAGEMENT'S DISCUSSION AND ANALYSIS *(continued)*

In fiscal year 2004, the Fund experienced gains in investment performance resulting in higher plan asset market value. Publicly traded equities, high-yield bonds and private equity were the strong performers during the year. The Fund's 2004 equity value-oriented strategies, combined with the exceptional performance in Domestic Equity, International Equity and Alternatives, produced an 18.41 percent return. In fiscal year 2003, the Fund experienced gains in investment performance resulting in a higher plan asset market value. Although the public and private equity markets continued to have a difficult year, fixed income investments, specifically high-yield and long term corporate bonds, had a banner year, returning 39 percent and 23 percent, respectively. The Fund has increased exposure to these two fixed-income strategies versus the market and has benefited from these strategies. During 2003, the Fund's equity value-oriented strategies, combined with the outstanding performance in fixed income, produced a 6.48 percent return.

Plan net assets at the end of fiscal year 2004, 2003 and 2002 totaled \$1,980,903,405; \$1,723,244,375 and \$1,660,164,965, respectively. The increase between fiscal year 2004 and fiscal year 2003 of approximately 15 percent is mainly due to market value appreciation in both domestic and international public equities. The increase between fiscal year 2003 and fiscal year 2002 of approximately 3.8 percent was due to improved market conditions.

The funds needed to finance retirement benefits are accumulated through the collection of employee member and employer contributions and through income on investments. These are offset by plan deductions. The amounts contributed by employee members for the last three fiscal years were \$14,238,463 (fiscal year 2004); \$13,994,725 (fiscal year 2003) and \$14,218,663 (fiscal year 2002). Employer contributions for the last three years were \$28,476,946 (fiscal year 2004); \$27,989,458 (fiscal year 2003) and \$28,450,723 (fiscal year 2002). The 2004 contributions increased over 2003 due to the increased contribution rate from 7.7 percent to 8.35 percent for employee members, and from 15.4 percent to 16.7 percent for employer contributions, effective September 1, 2003. Also, there was a substantial increase in new hires: 490 in 2004, up from 178 in fiscal year 2003. The primary reason for the decrease in contribution totals for fiscal year 2003 (as compared to fiscal year 2002) was the decline in overtime pay. Since July 1, 1996, by resolution of the Board of Trustees, the employee contribution rate had been 7.7 percent and the employer contribution rate 15.4 percent. Effective September 1, 2003, employee member and employer contribution rates increased to 8.35 percent and 16.7 percent, respectively.

Most deductions from plan net assets in a retirement system relate to the purpose for which it has been created: the payment of benefits. Consequently, recurring benefit payments prescribed by the plan, refunds of contributions to members, the cost of investment services and the cost of administering the Fund comprise the total deductions.

Deductions for fiscal year 2004, 2003 and 2002 totaled \$89,281,284; \$76,285,022 and \$63,307,682, respectively. This represents an increase of approximately 16.9 percent between fiscal year 2004 and fiscal year 2003, and 20.5 percent between fiscal year 2003 and fiscal year 2002.

The 16.9 percent increase in fiscal year 2004 and the 20.5 percent increase in 2003 is due primarily to:

- (1) Increased DROP distributions due to the increasing number of retired members who can access their DROP balances.
- (2) Increased benefit recipients: 130 in fiscal year 2004 and 147 in 2003.
- (3) The annual cost-of-living adjustment.

This growth in benefit payments is normal for a maturing pension fund.

In total, professional and administrative deductions increased between fiscal year 2004 and fiscal year 2003 and decreased between fiscal year 2003 and fiscal year 2002. The current year's increase is due to additional consulting expenses and an increase in staffing, insurance and depreciation expenses. Last year's decrease was mainly due to less production of printed material and less consulting/legal expenses. Consulting generally fluctuates from year to year due to outsourcing efforts, production of member publication and investment research needs.

Total additions to the Fund in fiscal year 2004 were \$346,940,314 and total deductions were \$89,281,284, thereby increasing Fund net assets by \$257,659,030. Total additions to the Fund in fiscal year 2003 were \$139,364,432 and total deductions were \$76,285,022.

MANAGEMENT'S DISCUSSION AND ANALYSIS *(continued)*

HISTORICAL TRENDS

Accounting standards require that the statement of plan net assets state assets at fair value, and include only benefits and refunds due plan members and beneficiaries, as well as accrued investment and administrative expenses as of the reporting date. Information regarding the actuarial funding status of the Fund is provided in the Schedule of Funding Progress (on page 20). The asset value stated in the Schedule of Funding Progress is the actuarial value of assets, determined by calculating the difference between the expected valuation of assets and the actual market value of assets, adjusted for any unrecognized gains or losses and amortized over a five-year period. The actuarial accrued liability is calculated using the entry age normal fund method.

The Fund, by State statute, may adopt an actuarial valuation once every three years. Since the last actuarial valuation adopted July 1, 2001, there have been changes in market conditions, benefits provided, changing legislation and potential actuarial assumption changes that indicate the Fund may require increased funding to remain fully funded.

Annual required contributions of the employer and contributions made by the employer in relation to the required contributions are provided in the Schedule of Employer Contributions (on page 20). This schedule indicates that the employer is generally meeting its responsibility to provide resources to the Fund.

STATEMENTS OF PLAN NET ASSETS

Years Ended June 30, 2004 and 2003

	2004	2003
<u>Assets</u>		
Investments, at fair value:		
Short-term investment funds	\$ 80,834,015	\$ 46,500,526
Commingled:		
Domestic		61,787,446
International		53,014,115
Fixed income:		
Domestic	518,923,963	433,386,738
International	98,753,983	153,183,197
Common equity:		
Domestic	460,205,938	296,459,231
International	378,515,041	276,806,480
Preferred equity		
Domestic	1,334,125	9,308,643
International	784,060	5,135,069
Alternative investments — partnerships	300,478,160	286,539,243
Real estate	108,338,565	73,620,654
Total investments	<u>1,948,167,850</u>	<u>1,695,741,342</u>
Cash and cash equivalents	<u>9,102,265</u>	<u>2,670,866</u>
Receivables:		
Accrued interest	8,719,988	9,040,928
Due from broker recapture	12,102	
Due from securities lending	86,128	48,374
Foreign funds contracts	527,131,367	2,475,104
Receivables for investments sold	17,371,966	28,030,597
Accrued dividends	1,621,272	1,014,723
City of Houston contributions	964,337	752,718
Member contributions	482,169	376,359
Total receivables	<u>556,389,329</u>	<u>41,738,803</u>
Collateral on securities lending arrangements, at fair value	402,958,901	201,148,476
Land	541,232	541,232
Building, net	8,085,109	8,391,797
Furniture, fixtures and equipment, net	1,416,718	1,273,883
Prepays (operating)	54,230	
Total assets	<u>2,926,715,634</u>	<u>1,951,506,399</u>
<u>Liabilities</u>		
Accounts payable and accrued expenses	2,289,361	1,893,561
Payables for investments purchased	12,963,933	22,758,139
Foreign taxes payable	43,032	22,805
Foreign funds contracts payable	527,557,002	2,439,043
Collateral on securities lending arrangements, at fair value	402,958,901	201,148,476
Total liabilities	<u>945,812,229</u>	<u>228,262,024</u>
Plan net assets held in trust for pension benefits	<u><u>\$ 1,980,903,405</u></u>	<u><u>\$ 1,723,244,375</u></u>

(A schedule of funding progress for the plan is presented on page 20.)

See accompanying Notes to Basic Financial Statements.

STATEMENTS OF CHANGES IN PLAN NET ASSETS

Years Ended June 30, 2004 and 2003

	2004	2003
<u>Additions to plan net assets:</u>		
Contributions:		
City of Houston	\$ 28,476,946	\$ 27,989,458
Members	14,238,463	13,994,725
	<u>42,715,409</u>	<u>41,984,183</u>
Net investment income:		
Net appreciation in fair value of investments	252,764,028	43,573,461
Interest	38,617,796	48,917,175
Dividends	15,475,695	10,391,086
Earnings from alternative investments — partnerships	8,186,731	4,661,330
Other	390,839	306,605
Earnings from real estate	2,462	7,322
Securities lending arrangements:		
Earnings	3,510,375	2,034,529
Rebates and fees	(2,757,500)	(1,568,259)
Total securities lending arrangements	<u>752,875</u>	<u>466,270</u>
Gross investment income	316,190,426	108,323,249
Less investment services expense	(11,965,521)	(10,943,000)
Net investment income	<u>304,224,905</u>	<u>97,380,249</u>
Total additions to plan net assets	<u>346,940,314</u>	<u>139,364,432</u>
<u>Deductions from plan net assets:</u>		
Benefits paid to members	83,618,595	71,385,364
Contribution refunds to members	97,363	125,824
Professional services	661,517	410,848
Administrative expenses	4,903,809	4,362,986
Total deductions from plan net assets	<u>89,281,284</u>	<u>76,285,022</u>
Net increase in plan net assets	257,659,030	63,079,410
Plan net assets held in trust for pension benefits, beginning of year	<u>1,723,244,375</u>	<u>1,660,164,965</u>
Plan net assets held in trust for pension benefits, end of year	<u>\$ 1,980,903,405</u>	<u>\$ 1,723,244,375</u>

See accompanying Notes to Basic Financial Statements.

NOTES TO BASIC FINANCIAL STATEMENTS *Years Ended June 30, 2004 and 2003*

1. DESCRIPTION OF PLAN AND SUMMARY OF SIGNIFICANT ACCOUNTING POLICIES

General

The Houston Firefighters' Relief and Retirement Fund (the Fund) was created in 1937 by act of the 45th Legislature of the State of Texas (Article 6243e). The current governing statute is Article 6243e2 (1), Vernon's Texas Civil Statutes (the Act). The Fund is a single employer defined benefit pension plan covering all firefighters employed full time by the City of Houston (the City) and provides for service, disability and death benefits for eligible members. At June 30, 2004 and 2003, the membership of the Fund consisted of the following:

	<u>2004</u>	<u>2003</u>
Retirees and beneficiaries		
currently receiving benefits	2,051	1,921
Former members entitled		
to benefits but not yet		
receiving them	9	10
Active members:		
Vested	2,109	2,176
Nonvested	1,554	1,142
Total members	<u>5,723</u>	<u>5,249</u>

The Fund is a local governmental plan and therefore is not subject to the Employee Retirement Income Security Act of 1974.

The Fund is a component unit of the City. The operation of the Fund is solely for the City of Houston firefighters. The Fund is governed by a Board of Trustees (the Board) and can only be terminated or amended by an act of the Legislature of the State of Texas. One member of the Board is either the City mayor or an appointed representative, five members are elected by active firefighters, one member is elected by retired firefighters, two members are citizen representatives, and one member is the City treasurer.

Contributions

During the fiscal year ended June 30, 2003, active members were required by statute to contribute 7.7 percent of their salary to the Fund. In fiscal year ended June 30, 2004, active members contributed 7.7 percent during the months of July and August 2003. Beginning September 1, 2003, active members began contributing 8.35 percent. The City is required to contribute a minimum of twice the members' contributions. The City contributed 15.4 percent of the gross salaries of active members for fiscal year ended June 30, 2003. The City's contribution will increase to 18 percent and member contributions will increase to 9 percent. This increase was done in two phases. Phase I: On September 1, 2003, firefighters' contributions increased from 7.7 percent to 8.35 percent (the City's contribution increased from 15.4 percent to 16.7 percent). Phase II: On July 1, 2004, firefighters contributions increase from 8.35 percent to 9 percent (the City's contributions increase from 16.7 percent to 18 percent).

Pension Benefits

Members with 20 or more years of service retiring on or after November 1, 1997, are entitled to a service retirement of 50 percent of average monthly salary (defined as the monthly average of their highest individual 78 pay periods), plus 3 percent of average monthly salary for each year of service in excess of 20 years until the member completes 30 years of service, for a total monthly pension not to exceed 80 percent of the member's average monthly salary for the highest 78 pay periods of the member's participation.

All members who retired prior to November 1, 1997, should consult the Act in effect at the time of retirement to determine pension benefits.

Pensions are adjusted annually for a fixed annual cost-of-living adjustment of 3 percent.

Active members with 20 or more years of service are eligible to elect to establish a Deferred Retirement Option Plan (DROP) account. When the DROP election becomes effective, a DROP account is established for the member and is credited with the following amounts: the monthly pension allowance determined as if the member had retired at the date the election was made, amounts equal to the deductions made from the DROP member's salary under Section 13(c) of the Act, 8.35 percent of the member's salary after September 1, 2003, and interest on those amounts, compounded monthly at an interest rate based on the Fund's actual average rate of return over the preceding five years. A member may participate in the DROP for a maximum of 10 years. The participant's monthly benefit at actual retirement would be increased by 2 percent of original monthly benefit for every full year of DROP participation. (Beginning September 1, 2000, the percentage increase applied to monthly benefits at actual retirement was 1 percent, to be phased in at 0.5 percent beginning on September 1, 2000, and an additional 0.5 percent beginning September 1, 2001. The benefit increase was then changed effective September 1, 2001, to be 2 percent per year.) A member may continue to be employed as a firefighter by the City after 10 years of participation in the DROP; however, the pension contributions deducted from the member's salary, the monthly pension allowance and the interest calculation would no longer be credited to the member's account. Effective September 1, 2003, the following three changes to the DROP were implemented: (1) the 1 percent annual administrative fee for retired members with DROP balances was removed; (2) a 5 percent floor and a 10 percent ceiling on annual DROP interest rates were implemented; and (3) widows of deceased members with DROP account balances may choose to leave the DROP accounts with the Fund.

Members or beneficiaries of members receiving pension or disability benefits (other than deferred retirees, survivors of deferred retirees or active members who have elected the DROP) shall receive an additional monthly benefit payment of \$150 along with their standard monthly benefit payment.

A benefit enhancement was enacted under Section 10 of the Act by the Board to allow members or beneficiaries of members receiving pension, disability or death benefits (other than deferred retirees,

NOTES TO BASIC FINANCIAL STATEMENTS *(continued)*

survivors of deferred retirees or active members who have elected the DROP) to receive an additional annual benefit payment, not to exceed \$5 million in aggregate per year and distributed each January.

For additional information on plan benefits, see the Houston Firefighters' Relief and Retirement Fund 2004 Summary Plan Description.

Disability Benefits

Service-connected disability benefits are 50 percent of average monthly salary (occupational), or 75 percent of average monthly salary (general), or the service retirement, if it is greater and if the member is eligible. Non-service-connected disability benefits amount to 25 percent of average monthly salary, plus 2.5 percent of average monthly salary for each year of service, up to a maximum of 50 percent of average monthly salary, or the service retirement, if it is greater and if the member is eligible.

Death Benefits

Death benefits are available to a surviving spouse, dependent children or dependent parents. Line-of-duty death benefits are payable at 100 percent of member's average monthly salary. If an active member dies who is eligible for a service, disability or deferred pension, the member's eligible survivors are entitled to death benefits equal to the benefits the member would have been entitled to. Post-retirement death benefits are equal to the benefits being paid to the member upon his or her death. If there are no eligible survivors, the Fund will refund to the member's designated beneficiary or estate the amount of the member's contributions, with 5 percent simple interest, not compounded, for members with at least 10 years but less than 20 years of service, and without interest for members with less than 10 years of service.

Vesting

Members who terminate employment with at least 10 years of service, but prior to becoming eligible for the service retirement, are entitled to 1.7 percent of average monthly salary for each year of service, payable beginning at age 50, or an optional refund of contributions with simple interest at 5 percent. Members who terminate their employment with less than 10 years of service may receive a refund of their contributions to the Fund, without interest. Members who terminated their employment prior to September 1, 1987, and prior to retirement for reasons other than death or disability forfeit their accumulated plan benefits, including their contributions to the Fund.

Basis of Presentation

The accompanying basic financial statements are presented in accordance with the Governmental Accounting Standards Board (GASB), which designates accounting principles and financial reporting standards applicable to State and local governmental units. The accompanying basic financial statements include solely the accounts of the Fund, which include all programs, activities and functions relating to the accumulation and investment of the net assets and related income necessary to provide the service, disability and death benefits required under the terms of the governing statutes and amendments thereto.

Recent Accounting Pronouncement

The GASB has issued Statement No. 40, *Deposit and Investment Risk Disclosures*, which amends GASB Statement No. 3, *Deposits with Financial Institutions, Investments (Including Repurchase Agreements) and Reverse Repurchase Agreements*. GASB Statement No. 40 requires disclosure information related to common risks inherent in deposit and investment transactions. The statement is effective for financial statements for periods beginning after June 15, 2004, and, accordingly, will be implemented by the Fund in fiscal year 2005.

Basis of Accounting

The basis of accounting is the method by which revenues and expenses are recognized in the accounts and reported in the basic financial statements. The accrual basis of accounting is used by the Fund. Under the accrual basis of accounting, revenues, which include contributions and investment income, are recognized when they are earned and collection is reasonably assured, and expenses are recognized when the liability is incurred. Employee member and employer contributions are recognized as revenue in the period in which the compensation is earned. In addition, the Fund records contribution according to Fund requirements and State statute. Benefits paid to members and contribution refunds are recognized when due and payable in accordance with the terms of the Fund. Accrued income, when deemed uncollectable, is charged to operations.

Reporting Entity

The Fund is a component unit of the City and its basic financial statements and required supplemental information are included in the City's comprehensive Annual Financial Report.

Use of Estimates

The preparation of financial statements in conformity with accounting principles generally accepted in the United States of America requires management to make estimates and assumptions that affect the reported amounts of assets and liabilities at the date of the financial statements and the reported amounts of revenues and expenses during the reporting period. Actual results could differ from those estimates.

Cash and Cash Equivalents

The Fund considers only demand deposits as cash. Cash-equivalent securities, which are composed of all highly liquid investments with a maturity of three months or less when purchased, are considered to be cash equivalents.

Investment Valuation and Income Recognition

Statutes of the State of Texas authorize the Fund to invest surplus funds in the manner provided by the Government Code, Title 8, Subtitle A, Subchapter C. This subchapter provides for the investment of surplus assets in any investment or investments that are deemed "prudent" by the Board. The investment policy of the Board does not restrict the types of investments authorized to be made on behalf of the Fund; however, the Board seeks to produce a return on investments that is based on prudent and reasonable investment risk and the cash flow requirements of the Fund given prevailing capital market conditions. While the Board recognizes the importance of the preservation of capital, it also adheres to the theory of capital market pricing which maintains that varying degrees of investment risk should be rewarded with incremental returns. Consequently, prudent risk-taking is justifiable.

NOTES TO BASIC FINANCIAL STATEMENTS *(continued)*

Investments are reported at fair value. Securities traded on a national or international exchange are valued at the last reported sales price at current exchange rates. Short-term investments are government and corporate bonds with a maturity of less than one year. The fair value of limited partnerships and real estate is based on independent appraisals and recent financial results. Investments that do not have an established market are reported at their estimated fair values.

Unrealized gains and losses are presented as net appreciation (depreciation) in fair value of investments on the statement of changes in plan net assets, along with gains and losses realized on sales of investments. Purchases and sales of investments and forward foreign exchange contracts are recorded on the settlement date. Gains or losses on forward foreign exchange contracts are recognized when the contract is complete.

Dividend income is recorded on the ex-dividend date. Interest and income from other investments are recorded as earned.

Building, Furniture, Fixtures and Equipment

Building, furniture, fixtures and equipment are recorded at cost less accumulated depreciation. Depreciation expense is computed using straight-line method over the estimated useful lives of the related assets ranging from 3 to 30 years. Any gain or loss on the retirement of assets is recognized currently. Major outlays for additions and improvements are capitalized if equal to or greater than \$5,000. Maintenance and repairs are charged to expense.

Administrative Expenses

The cost of administering the Fund is paid by the Fund from current earnings pursuant to an annual fiscal budget adjusted by the Board.

Reclassification

Certain amounts in 2003 have been reclassified to conform to current year presentation.

Federal Income Tax

The Fund received a favorable letter of determination dated December 29, 1998, from the Internal Revenue Service stating that the Fund qualifies as a tax-exempt plan and trust. The Fund's management and Board believe that the Fund is currently designed and being operated in compliance with the applicable requirements of the Internal Revenue Code.

2. CONTRIBUTIONS REQUIRED AND CONTRIBUTIONS MADE

Funding Policy

Contribution rates are established to remain level over time as a percentage of members' salaries. The contribution rate has been determined to provide for normal cost plus the level percentage of members' salaries required to amortize the unfunded actuarial accrued liability (or surplus) over 40 years from January 1, 1983. During fiscal year 2004, the actuarial amortization period was changed to rolling 30 years, and will be considered in the actuarial valuation in 2005.

The required contribution rate of the City, pursuant to an actuarial study effective July 1, 2001, consists of 22.3 percent of covered members' salaries to pay normal costs, reduced by 7.4 percent of covered members' salaries to amortize its funding surplus over 40 years, increased by 0.5 percent of covered members' salaries for an additional statutory requirement, resulting in a net contribution rate of 15.4 percent. The City is required to contribute at a rate that has been actuarially determined and adopted by the Board, but not less than twice the members' contributions.

ACTUARIALLY DETERMINED CONTRIBUTION REQUIREMENTS

	July 1, 2004*	July 1, 2003*
Employer normal cost	\$ 41,236,093	\$ 40,530,187
Member normal cost	14,238,463	13,994,725
Total normal cost	<u>55,474,556</u>	<u>54,524,912</u>
Additional statutory requirement	924,576	908,749
Less amortization of surplus actuarial accrued liability	<u>(13,683,723)</u>	<u>(13,449,478)</u>
Net contributions required	<u><u>\$ 42,715,409</u></u>	<u><u>\$ 41,984,183</u></u>
Employer contributions actually made	\$ 28,476,946	\$ 27,989,458
Member contributions actually made	<u>14,238,463</u>	<u>13,994,725</u>
Net contributions actually made	<u><u>\$ 42,715,409</u></u>	<u><u>\$ 41,984,183</u></u>

* Contribution rates based on July 1, 2001, actuarial study

The City's contribution will increase to 18 percent and member contributions will increase to 9 percent. This increase was done in two phases. Phase I: On September 1, 2003, firefighters' contributions increased from 7.7 percent to 8.35 percent (the City's contribution increased from, 15.4 percent to 16.7 percent). Phase II: On July 1, 2004, firefighters' contributions increase from 8.35 percent to 9 percent (the City's contribution increases from 16.7 percent to 18 percent).

Historical Trend Information

Historical trend information is provided as supplemental information on pages 20 through 23. This information is intended to demonstrate progress the Fund has made in accumulating sufficient assets to pay benefits when due and the related actuarial assumptions used in determining the actuarially determined amounts.

The Fund's contribution rates and the actuarial information included in schedules 1 and 2 is based on certain assumptions pertaining to interest rates, inflation rates and participant demographics, all of which are subject to change. Due to uncertainties inherent in the estimations and assumptions process, it is at least reasonably possible that changes in these estimates and assumptions in the near term could be material to the financial statements.

NOTES TO BASIC FINANCIAL STATEMENTS (continued)

3. CASH AND CASH EQUIVALENT SECURITIES

The cash balances of the Fund have been categorized to indicate the level of risk assumed by the Fund at year-end. Category 1 includes cash balances insured or collateralized with securities held by the Fund or by its agent in the name of the Fund. Category 2 includes cash balances collateralized with securities held by the pledging financial institutions' trust department or agent in the name of the Fund. Category 3 includes uncollateralized cash balances (including any bank balance collateralized with securities held by the pledging financial institution or by its trust department or agent but not in the name of the Fund). The cash balances of the Fund meet the criteria of Category 1 in both years. Cash on deposit with the custodian bank of the Fund is covered by securities held in the Fund's name.

4. INVESTMENTS

The investments of the Fund have been categorized to indicate the level of risk assumed by the Fund at year-end. Category 1 includes investments that are insured or registered, or for which the securities are held by the Fund or its agent in the name of the Fund. Category 2 includes investments which are uninsured and unregistered, with securities held by the counterparty's trust department or agent in the name of the Fund. Category 3 includes investments which are uninsured and unregistered, with securities held by the counterparty, or by its trust department or agent but not in the name of the Fund. Commingled funds and other investments are not required to be so categorized as they are not evidenced by securities that exist in physical or book entry form.

The following table presents a summary of the Fund's investments at fair value and related category of custodial credit risk as of June 30, 2004.

	Category 1	Category 3	Not Categorized	Total
Short-term investment funds	\$ 80,834,015			80,834,015
Fixed income:				
Domestic	518,923,963			518,923,963
International	98,753,983			98,753,983
Common equity	838,720,979			838,720,979
Preferred equity	2,118,185			2,118,185
Other investments — partnerships			300,478,160	300,478,160
Real estate			108,338,565	108,338,565
Collateral on securities lending arrangements, at fair value		402,958,901		402,958,901
Total investments	\$1,539,351,125	402,958,901	408,816,725	2,351,126,751

The following table presents a summary of the Fund's investments at fair value and related category of custodial credit risk as of June 30, 2003.

	Category 1	Category 3	Not Categorized	Total
Short-term investment funds	\$ 46,500,526			46,500,526
Commingled domestic equity funds			61,787,446	61,787,446
Commingled international equity funds			53,014,115	53,014,115
Fixed income:				
Domestic	433,386,738			433,386,738
International	153,183,197			153,183,197
Common equity	573,265,711			573,265,711
Preferred equity	14,443,712			14,443,712
Other investments — partnerships			286,539,243	286,539,243
Real estate			73,620,654	73,620,654
Collateral on securities lending arrangements, at fair value		201,148,476		201,148,476
Total investments	\$ 1,220,779,884	201,148,476	474,961,458	1,896,889,818

As of June 30, 2004, the Fund's investment of \$146,156,701 in a U.S. Treasury Bond exceeded 5 percent of Fund net assets.

As of June 30, 2003, there were no individual investments that exceeded 5 percent of Fund net assets.

NOTES TO BASIC FINANCIAL STATEMENTS *(continued)***5. FINANCIAL INSTRUMENTS WITH OFF-BALANCE SHEET RISK**

During fiscal year 2004, the Fund entered into forward foreign exchange contracts. A currency forward is a contractual agreement between two parties to pay or receive specific amounts of foreign currency at a future date in exchange for another currency at an agreed upon exchange rate. Forward commitments are not standardized and carry credit risk due to the possible nonperformance by one of the counterparties. The maximum potential loss is the aggregate face value in U.S. dollars at the time the contract was opened; however, the likelihood of such loss is remote. Fund management has limited the potential loss by contract when losses accumulate to more than 3 percent of the invested amount. No such losses occurred during fiscal year 2004. Forwards are usually traded over the counter. These transactions are entered into in order to hedge risks from exposure to foreign currency rate fluctuation and to facilitate trade settlement of foreign security transactions. Forwards carry market risk resulting from adverse fluctuations in foreign exchange rates. Recognition of realized gain or loss depends on whether the currency exchange rate has moved favorable or unfavorable to the contract holder upon termination of the contract. Prior to termination of the contract, the Fund records the unrealized currency translation gain or loss based on the applicable forward exchange rates.

6. LAND AND BUILDING

In February 1998, the Fund purchased land for use in the construction of a new office building for its operations and its members. In April of 2001, the construction of the new building was completed. As of June 30, 2004 and 2003, all capitalized costs associated with the building have been classified as building. The building cost of \$9,080,841 is being depreciated over 30 years. The accumulated depreciation for the building as of June 30, 2004 and 2003 amounted to \$995,732 and \$689,044, respectively.

7. FURNITURE, FIXTURES AND EQUIPMENT

Furniture, fixtures and equipment are comprised as follows at June 30:

	<u>2004</u>	<u>2003</u>
Office furnishings and equipment	\$ 732,778	683,854
Computer equipment	1,539,547	1,048,526
	<u>2,272,325</u>	<u>1,732,380</u>
Less accumulated depreciation	(855,607)	(458,497)
Furniture, fixtures and equipment, net	<u>\$1,416,718</u>	<u>1,273,883</u>

8. SECURITIES LENDING ARRANGEMENTS

The Fund had the following securities on loan and held the following related cash collateral balances, at fair value, as of June 30:

	2004	
	<u>Securities Lent</u>	<u>Collateral Held</u>
Fixed income	\$ 305,777,502	\$ 312,476,025
Common and preferred stocks	86,333,084	90,482,876
	<u>\$ 392,110,586</u>	<u>\$ 402,958,901</u>
	2003	
	<u>Securities Lent</u>	<u>Collateral Held</u>
Fixed income	\$ 147,751,983	\$ 152,340,732
Common and preferred stocks	46,311,435	48,807,744
	<u>\$ 194,063,418</u>	<u>\$ 201,148,476</u>

State statutes and Board policies permit the Fund to lend its securities to broker-dealers and other entities with a simultaneous agreement to return the collateral for the same securities in the future. The Fund's custodian lends securities of the type on loan for collateral in the form of cash or other securities of 101 percent to 109 percent, which varies based on the types of securities lent. The Fund has no credit risk exposure to borrowers because the amounts the Fund owes the borrowers exceed the amounts the borrowers owe the Fund as of June 30, 2004 and 2003. The contract with the Fund's custodian requires it to indemnify the Fund if the borrowers fail to return the securities (and if the collateral is inadequate to replace the securities lent) or fail to pay the Fund for income distributions by the securities' issuers while the securities are on loan.

All security loans can be terminated on demand by either the Fund or the borrower, although the average term of the loans is approximately 81 days and 73 days for June 30, 2004, and June 30, 2003, respectively. Cash collateral is invested in the lending agent's collateral investment pool, which has a weighted-average maturity of approximately 121 days and 95 days as of June 30, 2004 and 2003, respectively. The relationship between the maturities of the investment pool and the Fund's loans is affected by the maturities of the security loans made by other entities that use the agent's pool, which the Fund cannot determine. The Fund cannot pledge or sell collateral securities received unless the borrower defaults. At June 30, 2004 and 2003, securities lending transactions were collateralized in cash.

NOTES TO BASIC FINANCIAL STATEMENTS *(continued)*

9. COMMITMENTS AND CONTINGENCIES

As described in note 1, certain members of the Fund are entitled to refunds of their accumulated contributions on termination of employment with the City, prior to being eligible for pension benefits. As of June 30, 2004 and 2003, aggregate contributions from active members of the Fund with less than 10 years of service were approximately \$17,500,000 and \$14,000,000, respectively. Contributions for employees with 10 to 20 years of service have not been determined. As of June 30, 2004 and 2003, interest payable related to these contributions has not been accrued.

The Fund had outstanding investment commitments to various limited partnerships and international investment advisors of approximately \$155,844,000 and \$210,668,000 as of June 30, 2004 and 2003, respectively.

Pursuant to the May 23, 1993, revision of Section 2(l), Chapter 432, Acts of the 64th Legislature, 1973 (Article 6243e.2, Vernon's Texas Civil Statutes), the Board may, from Fund assets, establish a self-insurance fund to pay certain claims for indemnification. On June 17, 1993, the Board voted to adopt this subsection allowing for the establishment of a self-insurance fund from Fund assets. The self-insurance fund is a designation of plan net assets by the Board. As of June 30, 2004 and 2003, cumulative contributions made to the self-insurance fund by the Fund have been approximately \$5,000,000.

The Fund is a party to various claims and legal actions arising in the ordinary course of its business, which, in the opinion of management, will not have a material effect on the Fund's financial position.

10. RELATED PARTY

During fiscal years 2004 and 2003, the Plan utilized the services of an investment management company, in which the Plan also owns an interest in the amount of \$426,000 and \$473,000, respectively.

11. ADMINISTRATIVE BENEFIT PLAN

The Fund offers its employees a deferred compensation plan (the Plan) created in accordance with Internal Revenue Code 457. The Plan, available to all employees of the Fund, permits employees to defer a portion of their salary until future years. The deferred compensation is not available to employees until termination, retirement, death or unforeseeable emergency. The Plan is administered by Nationwide Retirement Solutions (Nationwide). Amounts deferred are held in trust by Nationwide and, since the Fund has no fiduciary responsibility for the Plan, these amounts are not reflected in the accompanying financial statements in accordance with GASB Statement No. 32.

12. RISK AND UNCERTAINTIES

The Fund invests in various investments securities. Investment securities are exposed to various risks such as interest rate, market and credit risks. Due to the level of risk associated with certain investment securities, it is at least reasonably possible that changes in the value of investment securities will occur in the near term and that such changes could materially affect the amounts reported in the statements of plan net assets.

The Fund's contribution rates and the actuarial information included in schedules 1 and 2 are based on certain assumptions pertaining to interest rates, inflation rates and participant demographics, all of which are subject to change. Due to uncertainties inherent in the estimations and assumptions process, it is at least reasonably possible that changes in these estimates and assumptions in the near term could be material to the financial statements.

REQUIRED SUPPLEMENTAL SCHEDULES

SCHEDULE 1 — SCHEDULE OF FUNDING PROGRESS (UNAUDITED)

(dollars in millions)

Valuation Date	Actuarial Value of Assets (AVA)	Actuarial Accrued Liability (AAL)	AVA as Percentage of AAL	Excess Funded AAL	Covered Payroll	Excess Funded AAL as Percentage of Covered Payroll
7-1-95	\$ 912.4	\$ 852.3	107%	\$ (60.1)	\$ 127.0	(47)%
7-1-96	1,024.5	989.3	104	(35.2)	131.6	(27)
7-1-97	1,183.8	1,128.2	105	(55.6)	142.0	(39)
7-1-98	1,347.4	1,271.4	106	(76.0)	149.0	(51)
7-1-99	1,538.5	1,470.6	105	(67.9)	159.0	(43)
7-1-00	1,726.3	1,589.3	109	(137.0)	163.6	(84)
7-1-01	1,863.1	1,650.8	113	(212.3)	164.3	(129)

Analysis of the dollar amounts of actuarial value of assets, actuarial accrued liability and unfunded actuarial accrued liability in isolation can be misleading. Expressing the actuarial value of assets as a percentage of the actuarial accrued liability provides one indication of the Fund's funding status on a going concern basis. Analysis of this percentage over time indicates whether the Fund is becoming financially stronger or weaker; generally, the greater this percentage, the stronger the Fund. Trends in unfunded actuarial accrued liability and covered payroll are both affected by inflation. Expressing the unfunded actuarial accrued liability as a percentage of covered payroll approximately adjusts for the effects of inflation and aids analysis of the Fund's progress made in accumulating sufficient assets to pay benefits when due. Generally, the smaller this percentage, the stronger the Fund.

See accompanying Note to Required Supplemental Schedules.

See accompanying Independent Auditors' Report.

SCHEDULE 2 — SCHEDULE OF EMPLOYER CONTRIBUTIONS (UNAUDITED)

(dollars in thousands)

Year ended June 30,	Annual Required Contribution	Percentage Contributed
1996	\$ 18,847	100%
1997	20,312	100
1998	21,720	100
1999	24,084	100
2000	24,645	100
2001	24,033	100
2002	28,451	100
2003	27,989	100
2004	28,477	100

Contributions were made in accordance with actuarially determined contribution requirements as adopted by the Board of Trustees.

See accompanying note to required supplemental schedules.

See accompanying Independent Auditors' Report.

NOTE TO REQUIRED SUPPLEMENTAL SCHEDULES (UNAUDITED)

The information presented in the required supplemental schedules was determined as part of the actuarial valuations at the dates indicated. Additional information as of the latest actuarial valuation follows:

Valuation date	July 1, 2001
Actuarial cost method	Entry age method
Amortization method	Level percent of payroll ending December 31, 2022, closed
Remaining amortization period	21 years
Asset valuation method	5-year smoothed market
Actuarial assumptions:	
Investment rate of return	8.5%, net of expenses
Salary increases in excess of inflation	0% to 6%, based on seniority and merit
General inflation rate	4% per year
Cost-of-living adjustment	3% annually

See accompanying Independent Auditors' Report.

ADDITIONAL SUPPLEMENTAL SCHEDULES

SCHEDULE 3 — INVESTMENT, PROFESSIONAL SERVICES AND ADMINISTRATIVE EXPENSES

Years Ended June 30, 2004 and 2003

	2004	2003
<u>Investment services:</u>		
Custodial services	\$ 464,580	\$ 316,030
Money management services	11,500,941	10,626,970
Total investment services	\$ 11,965,521	\$ 10,943,000
<u>Professional services:</u>		
Actuarial services	85,099	83,500
Audit and accounting services	31,100	17,500
Consulting services	459,506	246,587
Legal services	75,712	55,824
Medical examinations	10,100	7,437
Total professional services	\$ 661,517	\$ 410,848
<u>Administrative expenses:</u>		
Depreciation expense	703,798	578,649
Continuing education	206,045	303,658
Furniture, equipment and supplies	26,992	26,200
Insurance	744,064	638,512
Investment research	52,697	66,266
Office cost	2,832,118	2,457,794
Facility maintenance	168,944	130,758
Utilities	169,151	161,149
Total administrative expenses	\$ 4,903,809	\$ 4,362,986

See accompanying Independent Auditors' Report.

ADDITIONAL SUPPLEMENTAL SCHEDULES *(continued)*

SCHEDULE 4 — SUMMARY OF INVESTMENT AND PROFESSIONAL SERVICES *Year Ended June 30, 2004*

Individual or Firm Name	Official Plan Position	Payment	Nature of Services
Mellon Trust	Custodian	\$ 464,580	Custodial
Ariel Capital Management	Investment manager	364,120	Money management
Gulf Investment Management	Investment manager	430,763	Money management
Mellon EB Index	Investment manager	4,540	Money management
AllianceBernstein	Investment manager	792,924	Money management
State Street Research A	Investment manager	284,292	Money management
The Mitchell Group	Investment manager	244,584	Money management
Mercator	Investment manager	838,772	Money management
Marvin & Palmer	Investment manager	693,718	Money management
McKinley Capital	Investment manager	150,326	Money management
Victory	Investment manager	187,477	Money management
Schroder Investment Management	Investment manager	289,651	Money management
Scroder Emerging Markets	Investment manager	455,546	Money management
State Street Global	Investment manager	77,811	Money management
GW Capital	Investment manager	179,648	Money management
Loomis Sayles "A" and "B"	Investment manager	646,051	Money management
Standish/Mellon Bond "STIF"	Investment manager	128,098	Money management
STW Fixed Income Mgmt "A"	Investment manager	440,884	Money management
STW Fixed Income Mgmt "B"	Investment manager	82,534	Money management
Wachovia Emerging Growth	Investment manager	254,225	Money management
L&B	Investment manager	1,949	Money management
KREATE 1	Investment manager	290,200	Money management
Springbank	Investment manager	365,480	Money management
Texas Forest Partners	Investment manager	296,584	Money management
Lone Star Opportunity Fund	Investment manager	565,016	Money management
Energy Trust	Investment manager	426,020	Money management
Blackstone Capital Partners	Investment manager	282,899	Money management
Brazos Fund	Investment manager	2,467	Money management
Brera Capital	Investment manager	126,770	Money management
Hicks, Muse, Tate & Furst Fund	Investment manager	176,532	Money management
Industrial Growth Partners	Investment manager	286,486	Money management
Collier International Partners	Investment manager	283,417	Money management
Landmark Real Estate Fund	Investment manager	295,838	Money management
Lexington Capital Partners	Investment manager	528,618	Money management
Hyperion Partners	Investment manager	(393,471)	Money management
TCW Shared Opportunity Fund	Investment manager	495,961	Money management
Centennial Fund	Investment manager	871,906	Money management
Triad Ventures Ltd	Investment manager	(20,982)	Money management
Proton Therapy Center Houston	Investment manager	212,441	Money management
Total payments		\$ 12,104,675	
Accrued at June 30, 2003		(139,154)	
Total investment services		\$ 11,965,521	

See accompanying Independent Auditors' Report.

ADDITIONAL SUPPLEMENTAL SCHEDULES *(continued)***SCHEDULE 4 — SUMMARY OF INVESTMENT AND PROFESSIONAL SERVICES** *Year Ended June 30, 2004*

Individual or Firm Name	Official Plan Position	Payment	Nature of Services
Towers Perrin	Actuary	\$ 8,148	Actuarial
Mellon Consultants, Inc.	Actuary	76,951	Actuarial
Ogletree Deakins, P.C.	Attorneys	5,219	Legal
Klausner & Kaufman, P.A.	Attorneys	6,946	Legal
Strasburger and Price, L.L.P.	Attorneys	54,795	Legal
Locke, Lidell, and Sapp	Attorneys	4,500	Legal
Other	Other	4,252	Legal
Joseph Mason, C.P.A.	Auditors	4,000	Audit
Mir, Fox & Rodriguez, P. C.	Auditors	27,100	Audit
Other	Communications	3,958	Professional services
Printmailers, Inc.	Communications	4,836	Printing and design
GCI Read-Poland	Communications	64,719	Printing and design
Locke, Lidell, and Sapp	Consultant	94,750	Consulting
Mir, Fox & Rodriguez, P. C.	Consultant	6,958	Consulting
Websoft Publishing Company, Inc.	Consultant	680	Consulting
Accudata Systems, Inc.	Consultant	4,140	Consulting
DINI Partners	Consultant	9,000	Consulting
Vitech Systems Group, Inc.	Consultant	14,551	Consulting
HCC Employee Benefits, Inc.	Consultant	15,764	Consulting
Pension Consulting Alliance, Inc.	Consultant	22,500	Consulting
William & Jenson	Consultant	120,000	Consulting
Adcetera Design Studio, Inc.	Consultant/ Communications	89,650	Consulting, printing, and design
Texas Occupational Medicine	Physicians	2,100	Medical examinations
J.D. Britton, M.D.	Physicians	8,000	Medical examinations
Total payments		\$ 653,517	
Accrued at June 30, 2004		8,000	
Total professional services		\$ 661,517	

See accompanying Independent Auditors' Report.



Section 3
Investment Information

INVESTMENT
INFORMATION



Fiscal Year Ended June 30, 2004

REPORT OF THE CHIEF INVESTMENT OFFICER and OUTLINE OF INVESTMENT POLICIES

The primary goal of the Houston Firefighters' Relief and Retirement Fund's investment program is to provide sufficient investment returns with appropriate levels of risk necessary to pay timely and sufficient benefits to plan participants. The Fund's Board of Trustees seeks to produce a return through its investment program that is adequate to maintain the fully funded actuarial status of the Fund, while minimizing risk through portfolio diversification.

In fiscal year 2004, the Fund experienced a rate of return of 18.4 percent.

OUTLINE OF INVESTMENT POLICIES

The Board of Trustees of the Houston Firefighters' Relief and Retirement Fund has adopted the following policies. Authority to amend these policies rests solely with the Board of Trustees, which may delegate authority to act on certain matters to the Investment Committee, a committee consisting of the whole Board of Trustees.

INVESTMENT POLICIES

Investment Philosophy

In developing the investment program, the Investment Committee is guided by a set of precepts from which all investment decisions are made, establishing the foundation and direction for all future activity. The Investment Committee applies these precepts knowing the importance of asset allocation and the benefits of diversification. The guiding precepts consist of the following: long-term focused, value-driven, relationship-driven, opportunistic and contrarian.

Asset Allocation

The Investment Committee completed an asset allocation study during the year, which resulted in new asset classes, strategic allocations, ranges and benchmarks. The Investment Committee has allocated the assets of the Fund to several asset classes with the objective of optimizing the investment return of the Fund within the framework of acceptable risk and diversification. Each asset class is allowed to operate within its specific range as established by the Investment Committee.

In addition, a strategic allocation has been established for each asset class for the purpose of semiannual performance evaluation and asset rebalancing. If an asset class allocation reaches an endpoint of its range, the Investment Committee shall rebalance to within the asset class range, as needed, to meet investment return objectives. Current asset classes, asset class ranges and strategic allocations are as follows:

Asset Class	Asset Class Range	Strategic Allocation
Domestic Equities	15% – 25%	20%
International	19% – 29%	24%
Domestic Fixed Income	30% – 40%	35%
Alternative Investments	11% – 18%	15%
Real Estate	4% – 7%	5%
Cash	0.5% – 2.0%	1%

Investment Managers

The Board has adopted policies that govern the investment manager selection process, guidelines applicable to the managers, and review and retention procedures for all managers retained by the Fund.

The Fund's Investment Committee uses a systematic process in the selection of investment managers. This process includes rigorous due diligence by the Investment Committee, with assistance from staff and consultants. Manager guidelines include general guidelines applicable to all managers and specific guidelines unique to each manager. Specific guidelines unique to each manager are developed cooperatively by the Board and manager and incorporated into the Investment Management Services Contract executed by the Board and manager. The Investment Committee, with assistance from staff, continuously monitors each manager's performance and adherence to style, strategy and manager-specific guidelines. All active managers are required to present before the committee annually, while passive and alternative managers are reviewed as necessary.

Investment results were calculated using a time-weighted rate of return based on the market rate of return, which is not materially different from AIMR Performance Presentation Standards.

OUTLINE OF INVESTMENT POLICIES *(continued)* and INVESTMENT HOLDINGS ASSET ALLOCATION

Performance Objectives

The performance objective of the Fund is to meet or exceed the actuarial rate plus Fund expenses, currently 8.5 percent plus 75 basis points, over a long-term horizon that is defined as 10 years. To assess the performance of the overall Fund, the Investment Committee has established a target mix portfolio, which is reflective of the most recently approved asset allocation study. The target mix portfolio will consist of the following index weightings, which are representative of the Fund's current asset allocation:

Asset Class	Weight	Index
Domestic Fixed Income	35%	Lehman Universal Index
International	24%	MSCI All Country World Ex-US Index
Domestic Equities	20%	Russell 3000 Stock Index
Alternative Investments	15%	Flat Rate 15%
Real Estate	5%	Flat Rate 9.25%
Cash	1%	Merrill Lynch 90-Day Treasury Bill Index

Each manager is assigned an investment performance benchmark relative to his or her style of management. The performance objective for each manager is to provide a five-year rolling alpha in excess of the manager's fees.

Investment results were calculated using a time-weighted rate of return based on the market rate of return, which is not materially different from the AIMR Performance Presentation Standards.

Regarding Corporate Governance

The Board of Trustees recognizes its fiduciary obligation to cast its votes in corporate affairs. The Board adopts a written statement of proxy policies and reviews this statement annually. As a part of this policy, the Board has adopted the shareholder's bill of rights, as adopted by the Council of Institutional Investors. All proxies are to be voted in a timely manner in accordance with expressed policies. Voting practices are documented and reviewed by the Board. Shareholder and management proposals are both entitled to due consideration and are given the same degree of attention. At the present time, the Board of Trustees recognizes that voting on international corporate affairs is an extremely specialized and administratively difficult enterprise. The Board of Trustees may, at its discretion and through contractual means, delegate the authority to sign and submit proxy material on behalf of the Fund to international outside managers.

INVESTMENT HOLDINGS ASSET ALLOCATION *(dollars in millions)*

	Fiscal year ended June 30,									
	2000		2001		2002		2003		2004	
	Market Value*	Percent	Market Value	Percent	Market Value	Percent	Market Value	Percent	Market Value	Percent
Cash Equivalents [†]	\$9.3	0.5%	\$24.1	1.4%	\$9.8	0.6%	\$22.8	1.3%	\$59.7	3.1%
Domestic Equity [‡]	460.6	26.1	395.7	23.0	388.8	23.5	367.1	21.6	464.1	23.7
Fixed Income**	542.7	30.7	586.1	34.1	596.2	36.1	607.9	35.8	633.6	32.3
International Equity	351.2	19.9	337.7	19.7	310.3	18.8	339.9	20.0	391.1	20.0
Alternative Investments	402.5	22.8	374.1	21.8	346.2	21.0	286.5	16.9	300.5	15.4
Real Estate	—	—	—	—	—	—	74.1	4.4	108.3	5.5
	<u>\$1,766.3</u>	<u>100.0%</u>	<u>\$1,717.7</u>	<u>100.0%</u>	<u>\$1,651.3</u>	<u>100.0%</u>	<u>\$1,698.4</u>	<u>100.0%</u>	<u>\$1,957.3</u>	<u>100.0%</u>

* Includes receivables, payables and foreign currency fluctuations

† Includes cash residuals from managed accounts

‡ Excludes convertible securities

** Includes convertible securities

INVESTMENT RESULTS

TOTAL FUND RETURN

	2000	2001	Period Ended June 30,			Annualized Period Ended 6/30/2004		
			2002	2003	2004	3-Year	5-Year	10-Year
HFRRF	10.3%	1.1%	(2.4%)	6.48%	18.41%	7.16%	6.07%	10.3%

RETURNS BY ASSET CLASS

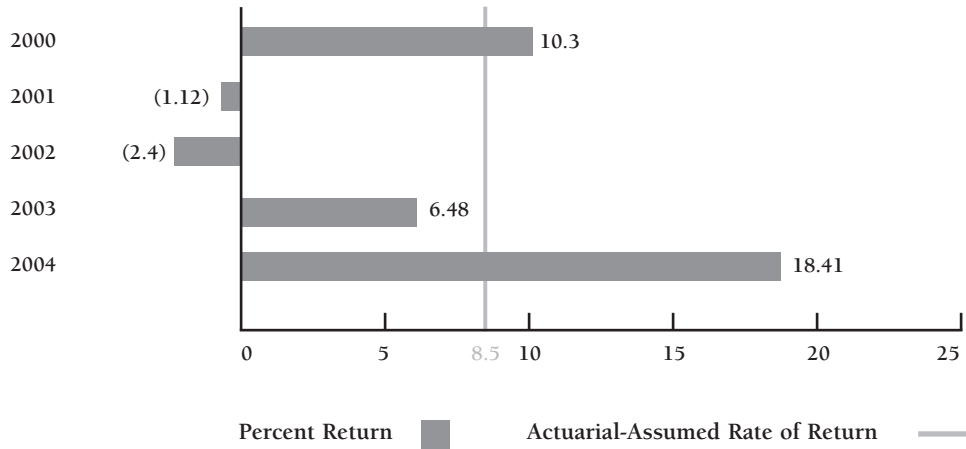
	2000	Period Ended June 30,				2004	Annualized Period Ended 6/30/2004	
		2001	2002	2003	3-Year		5-Year	
Cash								
HFRRF*	9.9%	12.2%	9.3%	1.0%	3.0%	4.4%	7.0%	
Merrill Lynch 90-Day T-Bill Index	5.5	5.9	2.6	1.5	1.0	1.7	3.3	
Domestic Equity								
HFRRF	(1.4)	11.2	(1.0)	(1.8)	30.9	8.4	6.9	
Russell 3000 Stock Index	9.6	(13.9)	(17.3)	0.8	20.5	0.2	(1.1)	
Domestic Fixed Income								
HFRRF	4.8	5.2	1.8	26.8	4.7	10.6	8.3	
Lehman Universal Index	4.8	10.8	7.7	11.5	1.0	6.7	7.1	
International Equities								
HFRRF	22.1	(22.2)	(8.1)	(6.9)	34.3	4.7	1.7	
MSCI All Country World Ex-US Index	18.8	(23.8)	(9.4)	(5.6)	32.5	5.3	1.0	
Alternative Investments								
HFRRF	35.3	(2.9)	(6.7)	(7.4)	20.1	1.3	6.4	
Flat Rate 15%	15.0	15.0	15.0	15.0	15.0	15.0	15.0	
Real Estate Investments								
HFRRF	5.6	(4.6)	1.5	1.7	4.0	2.4	1.6	
Flat Rate 9.25%	9.25	9.25	9.25	9.25	9.25	9.25	9.25	

* Includes results from equity distributions into the cash account

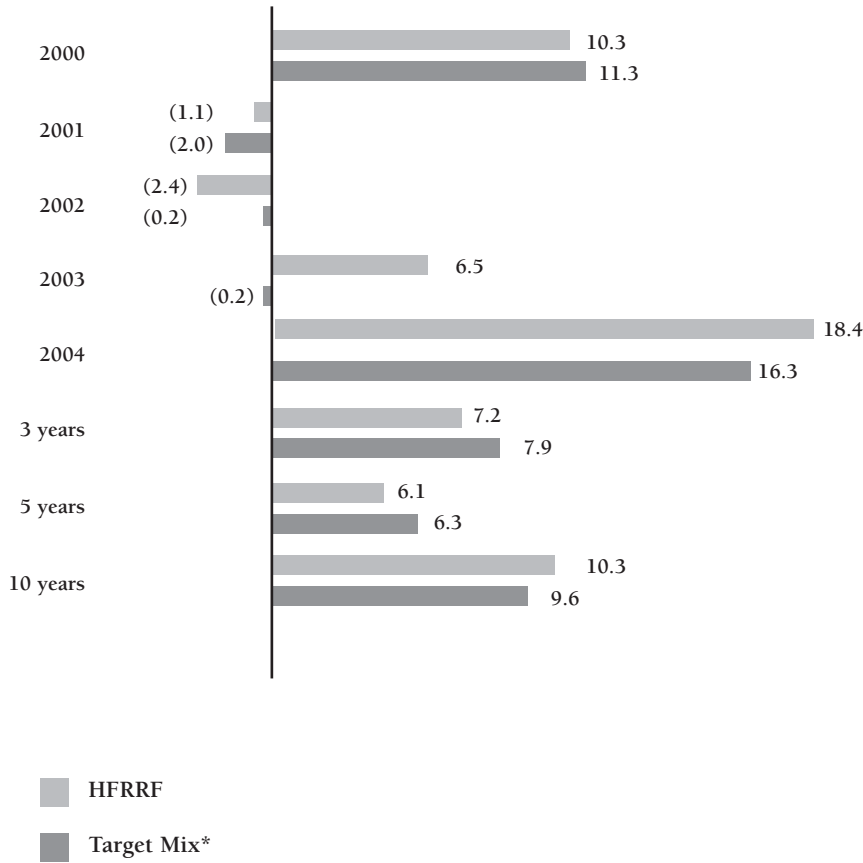
Investment results were calculated using a time-weighted rate of return based on the market rate of return, which is not materially different from AIMR Performance Presentation Standards.

INVESTMENT RESULTS *(continued)*

TOTAL FUND RETURN vs. ACTUARIAL-ASSUMED RATE OF RETURN



TOTAL FUND RETURN vs. TARGET MIX RETURN



* "Target mix," or target asset mix portfolio, is explained on page 26.

INVESTMENT RESULTS *(continued)***COMPARISON OF INVESTMENT RETURNS** *Years Ended June 30*

Year	Total Fund	Median Total Fund*	Fund Domestic Equity Investments	Russell 3000 Stock Index	S&P500 Stock Index	Fund Fixed-Income (Bond) Investments	Lehman Bros. Universal	Lehman Bros. Gov/Credit	Fund International Equity	MSCI All Country World Ex-US	MSCI EAFE
1993	16.7%	13.6%	19.7%	16.0%	13.6%	20.7%	12.0%	13.2%	12.2%	—%	20.3%
1994	5.7	2.4	2.0	1.0	1.3	2.0	(1.1)	(1.5)	19.7	—	17.0
1995	15.5	16.7	22.1	24.9	26.1	17.5	12.4	12.8	4.1	—	1.7
1996	16.9	17.4	21.5	26.0	26.1	12.2	5.7	4.7	17.9	—	13.3
1997	23.2	20.0	31.5	30.6	34.6	14.3	8.8	7.8	15.5	—	12.8
1998	13.1	17.9	14.6	28.8	30.2	13.2	10.1	11.3	6.1	—	6.1
1999	5.5	11.4	6.7	20.1	22.7	2.2	2.6	2.7	6.3	8.3	7.6
2000	10.3	10.0	(1.4)	9.6	7.3	4.8	4.8	4.3	22.1	16.6	17.2
2001	(1.1)	(4.7)	11.2	(13.9)	(14.8)	5.2	10.8	11.1	(22.2)	(25.4)	(24.8)
2002	(2.4)	(6.0)	(1.0)	(17.3)	(18.0)	1.8	7.7	8.2	(8.1)	(9.4)	(9.5)
2003	6.48	3.94	(1.76)	0.77	0.26	26.84	11.51	13.14	(6.92)	(5.58)	(6.05)
2004	18.41	15.75	30.92	20.46	19.1	4.72	1.0	(0.71)	34.32	31.95	32.37

* Trust Universe Comparison Service Public Funds Total Returns

COMPOUND ANNUAL RETURN *Years Ended June 30*

	Total Fund	Median Total Fund*	Fund Domestic Equity Investments	Russell 3000 Stock Index	S&P500 Stock Index	Fund Fixed-Income (Bond) Investments	Lehman Bros. Universal	Lehman Bros. Gov/Credit
2	12.3%	9.5	13.4%	10.2%	9.3%	15.3%	6.1%	6.0%
3	7.2	4.1	8.4	0.2	(0.7)	10.6	6.7	6.7
5	6.1	3.6	6.9	(1.1)	(2.2)	8.3	7.1	7.1
10	10.3	9.7	12.8	11.7	11.8	10.0	7.5	7.8

* Trust Universe Comparison Service Public Funds Total Returns

INVESTMENT HOLDINGS SUMMARY

TEN LARGEST HOLDINGS

Description	Market Value	Percent of Total Market Value
U S TREASURY BONDS	\$146,156,701	7.47%
U S TREASURY BONDS	19,906,313	1.02
U S TREASURY NOTES	13,838,840	0.71
U S TREASURY NOTES	10,162,979	0.52
U S TREASURY NOTES	8,760,500	0.45
XEROX CAP TR I CAP SECS	8,436,975	0.43
SCHLUMBERGER LTD COM	8,046,717	0.41
BAXTER INTL INC COM	7,895,888	0.40
JOHNSON & JOHNSON COM	7,558,490	0.39
GEORGIA PAC CORP DEB	7,473,600	0.38

FEEES FOR INVESTMENT SERVICES

	Fiscal year 2004			Fiscal year 2003		
	Assets Under Management	Fees	Basis Points*	Assets Under Management	Fees	Basis Points
<u>Investment Management Fees:</u>						
Cash Equivalents Manager†	\$ 89,936,280	\$ (6,045)‡	(1)	\$ 49,171,392	\$ 229,294	47
Domestic Equity Managers	464,109,892	2,210,713	48	352,449,040	1,671,840	47
International Equity Managers	391,085,045	2,597,932	66	334,827,867	1,539,776	46
Fixed-Income Managers	633,562,313	1,349,117	21	616,634,734	1,328,147	22
Alternative Investments	300,478,160	4,139,918	138	286,539,243	5,678,468	198
Real Estate Investments	108,338,565	1,208,438	112	73,620,654	179,445	24
<u>Other Investment Services:</u>						
Custodial	1,957,270,115	465,448	2.4	1,698,412,208	316,030	1.8
Total Fees for Investment Services		\$11,965,521	61		\$ 10,943,000	64

*Calculated using average quarterly assets under management

† Includes residual cash from separate accounts, which is swept daily and included in the Super STIF cash management portfolio.

‡ Reduced due to an overestimated accrual from prior year (fiscal year 2003).

2004 BROKERAGE COMMISSIONS

(in order of commissions received)

Broker Name	Base Commissions	Broker Name	Base Commissions
LYNCH JONES & RYAN INC*	\$167,299	PRUDENTIAL EQUITY GROUP, NEW YORK	\$7,195
PERSHING SECURITIES LTD, LONDON	\$122,100	DEUTSCHE SEC ASIA LTD, HONG KONG	\$7,051
GOLDMAN SACHS & CO, NY	\$98,774	MORGAN GUARANTY TR, BRUSSELS	\$6,856
UBS SECURITIES LLC, NEW YORK	\$60,699	LEHMAN BROS SECS ASIA LTD, HONG KONG	\$6,658
UBS/CUST LDN BRAN STAMFORD	\$56,793	PERSHING DIVISION OF DLJ, NY	\$6,493
CREDIT LYONNAIS SECURITIES ASIA, GUERNSEY	\$55,680	CITIGROUP GBL MKTS/SALOMON, NEW YORK	\$6,357
MERRILL LYNCH PIERCE FENNER SMITH INC NY	\$52,646	KNIGHT SEC BROADCORT, JERSEY CITY	\$6,319
DEUTSCHE BANC ALEX BROWN INC, NEW YORK	\$45,194	CSFB (HK) LIMITED, HONG KONG	\$6,131
MERRILL LYNCH PIERCE FENNER, WILMINGTON	\$41,709	MIZUHO SECURITIES USA INC, NEW YORK	\$5,801
MORGAN J P SECS INC, NEW YORK	\$35,583	FACTSET DATA SYSTEMS INC, NY	\$5,608
S G WARBURG, SEOUL	\$31,967	HSBC JAMES CAPEL, NEW YORK	\$5,566
CREDIT LYONNAIS SECS, NEW YORK	\$29,860	HSBC BANK PLC (MIDLAND BK)(JAC), LONDON	\$4,933
CREDIT SUISSE FIRST BOSTON CORP, NY	\$29,344	CREDIT LYONNAIS SEC, SEOUL	\$4,930
MERRILL LYNCH INTL LONDON EQUITIES	\$29,298	UBS AG/CUST LDN BRANCH, STAMFORD	\$4,869
CREDIT SUISSE FIRST BOSTON (EUROPE), LON	\$28,542	JP MORGAN BROKING (HK) LTD, HONG KONG	\$4,717
MERRILL LYNCH INTL LTD, NEW YORK	\$27,120	ALLEN & CO INC, NEW YORK	\$4,561
BEAR STEARNS & CO INC, NY	\$26,058	DEAN WITTER REYNOLDS INC, NY	\$4,500
MORGAN STANLEY & CO INTL, LONDON	\$25,980	BANQUE PICTET AND CIE, GENEVA	\$4,489
J P MORGAN SECS LTD, LONDON	\$24,602	HOARE GOVETT SECS LTD, LONDON	\$4,448
DRESDNER KLEINWORT BENSON, NEW YORK	\$21,513	LIQUIDNET INC, BROOKLYN	\$3,912
INVESTMENT TECHNOLOGY GROUPS, NEW YORK	\$20,475	ABN AMRO SECS LLC, NEW YORK	\$3,846
SALOMON BROS INTL LTD, LONDON	\$19,971	CALYON SECURITIES USA, NEW YORK	\$3,735
UBS WARBURG ASIA LTD, HONG KONG	\$19,766	BANCO BILBAO VIZCAYA, NEW YORK	\$3,503
DRESDNER KLEINWORT WASSERSTEIN, LONDON	\$16,925	JP MORGAN SECS ASIA PACIFIC, HONG KONG	\$3,365
S G COWEN & CO LLC, NEW YORK	\$16,116	PETRIE PARKMAN & CO, DENVER	\$3,301
LEHMAN BROS INC, NEW YORK	\$15,963	BROADCOURT CAP CORP/SUB OF MLPF&S, NY	\$3,272
MORGAN STANLEY & CO INC, NY	\$15,854	WEEDEN & CO, NEW YORK	\$3,210
DEUTSCHE BK AG (INTL EQUITIES), LONDON	\$13,680	BNP PARIBAS PEREGRINE SEC LTD, HONG KONG	\$3,135
INTERMONTE SEC CIM, MILAN	\$13,481	JEFFERIES & CO INC, NEW YORK	\$3,101
STATE STREET BROKERAGE SVCS, BOSTON	\$12,695	BBVA SECURITIES INC, NEW YORK	\$3,063
MACQUARIE EQUITIES LTD, SYDNEY	\$12,111	SANDERS MORRIS MUNDY, HOUSTON	\$3,009
NOMURA SECS INTL INC, NEW YORK	\$11,867	NBCN CLEARING INC, TORONTO (NBCS)	\$2,920
LEHMAN BROS INTL, LONDON	\$11,523	HOWARD WEIL LABOUISSIE FRIEDRICH, NEW OR	\$2,916
BHC SECS INC, PHILADELPHIA	\$11,436	GMP SECURITIES LTD, TORONTO	\$2,888
BANCO SANTANDER, NEW YORK	\$11,179	CHEUVREUX JR DE VIRIEV SA, NY	\$2,882
SG AMERICAS SECURITIES LLC, NEW YORK	\$10,677	RBC CAPITAL MARKETS CORP, NEW YORK	\$2,809
SAMSUNG SECS, SEOUL	\$10,535	STANDARD & POORS SEC INC, NEW YORK	\$2,780
SEI FINANCIAL SERVICES CO, NEW YORK	\$9,691	INSTINET PAC SERV, HONG KONG	\$2,764
CREDIT AGRICOLE SECS, NY	\$9,536	DEUTSCHE SEC ASIA LTD, SEOUL	\$2,605
UBS EQUITIES, LONDON	\$9,214	INSTINET CORP, NY	\$2,605
UNION BANK SWITZERLAND SECS, LONDON	\$8,561	SIMMONS & CO INTL, HOUSTON	\$2,571
BEAR STEARNS SEC CORP, BROOKLYN	\$8,531	RBC DOMINION SECS INC, TORONTO (DOMA)	\$2,540
DAIWA SECS AMER INC, NEW YORK	\$8,482	LEGG MASON WOOD WALKER INC, BALTIMORE	\$2,533
CREDIT LYONNAIS SECURITIES INC, NEW YORK	\$8,250	BRIDGE TRADING CO, ST LOUIS	\$2,416
BERNSTEIN SANFORD C & CO, NEW YORK	\$8,228	J B WERE & SON LTD, LONDON	\$2,381
PACIFIC CREST SEC, PORTLAND	\$7,780	TORONTO DOMINION SEC, TORONTO	\$2,325
BANC OF AMERICA SECS LLC, CHARLOTTE	\$7,630	JONES & ASSOCIATES INC, WESTLAKE VILLAGE	\$2,278
GOLDMAN SACHS INTL, LONDON	\$7,605	OTHER BROKERS	\$83,361
MERRILL LYNCH, NY	\$7,428		
CITIGROUP GBL MKTS INC, NEW YORK	\$7,401		\$1,644,242
BHF SEC CORP, NEW YORK	\$7,384		

* Commission recapture broker

Totals may include slight variances due to rounding.

COMMISSION RECAPTURE PROGRAM

Houston Firefighters' Relief and Retirement Fund began a brokerage commission recapture program in 1993. Currently, the brokerage firm of Lynch, Jones & Ryan Inc. participates in the program. A portion of any commission generated by trading activity conducted by the Fund's investment managers with these firms is returned or recaptured by the Fund. The amount of the commissions recaptured is defined via contracts with the individual brokerage firms and varies with the type of trading activity. Any commissions recaptured are deposited in the investment manager's account from whom the trading activity originated. The Fund's investment managers are not required to participate in the program, but the Board feels it has provided ample financial incentive for solid participation. During fiscal year 2004, slightly over 10 percent of all trading activity was directed toward the commission recapture program.



Section 4
Actuarial Information

ACTUARIAL INFORMATION



Fiscal Year Ended June 30, 2004

AN OVERVIEW OF THE ACTUARIAL VALUATION

There are several types of retirement plans, each designed to provide income security after retirement. How each type of plan is funded varies depending on the type of plan. The Houston Firefighters' Relief and Retirement Fund is a single-employer defined benefit plan, which requires an actuarial valuation to determine the amount of funding required to pay benefits. Another type of plan, a defined contribution plan, does not require an actuarial valuation.

TYPES OF RETIREMENT PLANS

Defined contribution plans accumulate contributions (employee only, or employee and employer). The plan then provides a benefit based on the actual investment growth (or decline) of those contributions. A specific benefit is not promised. Adequate funding is accomplished simply by making the required contributions.

The Houston Firefighters' Relief and Retirement Fund is a defined benefit plan. Defined benefit plans represent a promise to pay specific benefits to employees. The benefit to employees and their survivors is usually much more than the combined contributions of the employee (if specified) and the employer. Determining adequate funding requires making a variety of assumptions to assure full payments can be made from the plan.

FUNDING FOR A DEFINED BENEFIT PLAN

Adequate funding of a defined benefit plan is necessary because employees are promised a specific benefit at retirement (based on the plan formula). Therefore, there must be enough money in the plan to pay the benefits that have been promised.

The exact amount of money required to provide future benefits cannot be determined without making some assumptions. It is necessary for an actuary (a person trained to calculate these types of risks) to make specific assumptions. The actuary must then determine a cost method to assure adequate funding so the Fund can provide promised benefits.

ACTUARIAL COST METHOD

Using an actuarial cost method involves estimating the ultimate cost of the plan, then establishing a systematic way to cover a proportionate part of the estimated cost each year through advance funding. The ultimate cost of a plan includes all specific benefits that are promised to be paid, plus all administrative expenses, less any investment earnings realized over the total life of the plan. Since the exact ultimate cost of the plan cannot be determined until the last retired member of a plan dies, it must be actuarially estimated by forecasting the plan's expenses and investment return. The necessary funding, or contribution amount, is established from these estimates.

Estimating the total amount of benefits that will be paid to members requires the use of statistical methods, because the estimate depends on assumptions about the actual number of people who will receive benefits and the amount of the benefits. Therefore, assumptions must be made about the number of active members and beneficiaries who will receive benefits or become disabled, the duration of retirement and disability payments, amounts paid at different ages, mortality rates, pay raises, terminations, and layoffs — for all the years the plan is in existence.

Administrative expenses must also be estimated. This requires specific accounting and managerial expertise. Investment analysis and forecasting are also required to estimate earnings on plan assets.

ACTUARY'S REPORT

The information that follows was determined using specific actuarial methods, which have been generally described above. The methods were applied to census data about active firefighters, retirees and beneficiaries of the Fund as of July 1, 2001.

ACTUARY'S CERTIFICATION

1 Houston Center
1221 McKinney, Suite 2600
Houston, TX 77010-1006
713 754-5400
Fax: 713 754-5462

Towers Perrin

October 22, 2002

Board of Trustees
Houston Firefighters' Relief and Retirement Fund

DEAR BOARD MEMBERS:

We certify that the information contained in our July 1, 2001 Actuarial Report for the Houston Firefighters' Relief and Retirement Fund and reproduced in the Fund's 2002 Comprehensive Annual Financial Report (CAFR) has been prepared in accordance with generally accepted actuarial principles and practices. To the best of our knowledge, the information is accurate and fairly presents the actuarial position of the Fund as of July 1, 2001. Actuarial valuations are conducted annually.

All of the tables shown in the Actuarial Section of the CAFR were prepared by the staff of the Houston Firefighters' Relief and Retirement Fund (including the trend data schedules on pages 20–22) based on the information provided in the Towers Perrin July 1, 2001 Actuarial Report. In preparing the July 1, 2001 Actuarial Report, we have relied upon information provided by the Board of Trustees regarding plan provisions, plan participants, plan assets and other matters. Historical information for years prior to 1984 was prepared by the prior actuaries and was not subjected to our actuarial review.

FINANCING OBJECTIVE OF THE FUND

Contribution rates are established that, over time, will remain level as a percentage of payroll. The total contribution rate has been determined to provide for normal cost plus the level percentage of payroll required to amortize the unfunded actuarial accrued liability (or surplus), including the effects of actuarial gains and losses, over 40 years from January 1, 1983. The employee contribution rate is 7.7 percent of pay. The City contribution rate is the total contribution rate offset by the employee contribution rate, but not less than the statutory minimum of twice the employee contribution rate.

PROGRESS TOWARD REALIZATION OF FINANCING OBJECTIVE

The summary of accrued and unfunded accrued liabilities shown in Section II of the Actuarial Report illustrates the progress toward realization of the financing objective. Certain trend data is also contained in Section II.

DISCLOSURE OF PENSION INFORMATION

Effective for the fiscal year beginning July 1, 1996, the Board of Trustees has adopted compliance with the requirements of Governmental Accounting Standards Board (GASB) Statement No. 25. The information required to be disclosed by GASB No. 25 in the notes to the Fund's financial statements is shown in Sections II and III of the Actuarial Report.

DATA

In preparing the July 1, 2001 actuarial valuation, we relied upon data provided by the Board. As part of this valuation, we tested the data for reasonableness. We did not, however, subject this data to any auditing procedures. The data is reviewed annually by the Fund's auditor.

ACTUARIAL METHODS AND ASSUMPTIONS

The actuarial methods and assumptions described in Section VI of the Actuarial Report were selected by the Board of Trustees. The actuarial cost method is the entry age method, with liabilities allocated from date of entry to 40 years of service. The unfunded actuarial accrued liability (surplus), including the effects of actuarial gains and losses, is amortized as a level percentage of payroll ending December 31, 2022. The contribution is increased for interest for one-half of a year to reflect timing of payment. The actuarial value of assets recognizes gains and losses in the market value of assets, based on the difference between the actual rate of return and the assumed rate of return, over five years.

The Board has sole authority to determine the actuarial assumptions. Changes in the actuarial methods and assumptions since the prior valuation are described in Section VI of the report. A study of actuarial experience was last conducted for the years 1983 through 1999. In our opinion, the actuarial assumptions used are appropriate for purposes of the valuation and, in the aggregate, are reasonably related to the experience of the Fund and to reasonable expectations.

PLAN PROVISIONS

The plan provisions used in the actuarial valuation are described in Section VI of the Actuarial Report. Changes in the plan provisions since the prior valuation are also described in Section VI.

We are available to answer any questions on the information contained in the report, or to provide any additional information you may need.

Sincerely,



Adam S. Berk, ASA, EA, MAAA, CFA
Principal



Wesley A. Pieper, ASA, EA, MAAA
Consultant

SUMMARY OF ACTUARIAL ASSUMPTIONS AND METHODS July 1, 2001**INVESTMENT RETURN**

Eight-and-a-half percent per year, net of expenses.

PAYROLL GROWTH RATE

Five percent per year.

INFLATION

Four percent per year.

INDIVIDUAL SALARY INCREASES

Age	Annual Salary Increase Rate
20	10.0%
25	7.5
30	6.0
35	5.0
40	4.5
45	4.0
50	3.5
55 and over	3.0

MORTALITY RATES (Non-Disabled)

1994 Group Annuity Mortality Table

Age	Probability of Death Within One Year After Attaining Age Shown	
	Male	Female
20	0.05%	0.03%
25	0.07	0.03
30	0.08	0.04
35	0.09	0.05
40	0.11	0.07
45	0.16	0.10
50	0.26	0.14
55	0.44	0.23
60	0.80	0.44

The 1994 Group Annuity Mortality Table is used to determine the mortality assumptions of the plan, including the probability of withdrawal from active service due to death.

TERMINATION RATES

Probability of Terminating Service
(for Reasons Other Than Death,
Disability or Retirement) Within One Year
After Attaining Age Shown

Age	Probability of Terminating Service (for Reasons Other Than Death, Disability or Retirement) Within One Year After Attaining Age Shown
20	1.3%
25	1.3
30	1.2
35	0.7
40	0.6
45	0.2
50	0.0

The liability for the optional refund of contributions for participants who terminate with at least 10 but less than 20 years of service was determined by assuming that 50% of such participants elect a refund and 50% elect a deferred monthly benefit.

DISABILITY RATES

Probability of Becoming Totally Disabled
Within One Year After Attaining Age Shown

Age	Probability of Becoming Totally Disabled Within One Year After Attaining Age Shown
20	0.75%
25	0.75
30	0.75
35	1.50
40	1.50
45	1.50
50	1.50
55	1.50
60	3.00

DISABLED MORTALITY RATES

After Becoming Disabled,
Probability of Death Within One
Year After Attaining Age Shown

Age	Male	Female
25	2.6%	1.3%
35	2.8	2.2
45	3.5	2.3
55	5.3	3.0

The actuarial assumptions and methods were adopted by the Board of Trustees on October 15, 2002, for use in the July 1, 2001, valuation of the Fund.

SUMMARY OF ACTUARIAL ASSUMPTIONS AND METHODS July 1, 2001 (continued)**PERCENTAGE OF DEATH AND DISABILITY
IN LINE OF DUTY**

Age	Death	Disability
25	100%	60%
35	100	60
45	42	34
55	20	25

One percent of firefighters who become disabled in the line of duty are assumed to be incapable of performing any substantial gainful activity.

RETIREMENT RATES

Service	Probability of Retiring Within One Year
20	2.0%
21 – 22	3.0
23 – 25	4.0
26 – 28	5.0
29	10.0
30	20.0

DROP DURATION

Duration at Retirement	Percentage of Participants Electing the Duration
0	10%
3	10
5	10
8	30
10	40

PERCENTAGE MARRIED

Ninety percent married, with husbands assumed to be three years older than wives. No beneficiaries other than spouse assumed.

ACTUARIAL VALUE OF ASSETS

Gains and losses in the market value of assets, based on the difference between the actual rate of return and the assumed rate of return, are recognized in the actuarial value over five years.

ACTUARIAL COST METHOD

Entry Age Method, with liabilities allocated from date of entry to 30 years of service. The Unfunded Actuarial Accrued Liability (Surplus), including the effects of actuarial gains and losses, is amortized as a level percentage of payroll ending December 31, 2022. The contribution is increased for interest for one-half of a year to reflect timing of payment.

**CHANGES IN ACTUARIAL METHODS AND
ASSUMPTIONS SINCE THE PRIOR YEAR**

The actuarial methods and assumptions used in this valuation are the same as those used in prior valuations except for changes in the individual pay increase rates, retirement rates and DROP duration.

MEMBER DATA July 1, 2001**ACTIVE MEMBER AND DROP PARTICIPANT VALUATION DATA**

Valuation Date	Number	Average Age	Annual Payroll (dollars in millions)	Annual Average Salary	Percentage Increase in Average Salary
7-1-96	3,039	40.1	\$ 131.6	\$ 43,317	5.2%
7-1-97	3,202	40.2	141.9	44,331	2.3
7-1-98	3,229	40.9	149.0	46,158	4.1
7-1-99	3,282	41.4	159.0	48,435	4.9
7-1-00	3,271	42.1	163.6	50,024	3.3
7-1-01	3,318	42.1	164.3	49,522	(1.0)

RETIREES AND BENEFICIARIES ADDED TO AND REMOVED FROM ROLLS

Year Ended	Added to Rolls		Removed from Rolls		Rolls — End of Year		Percentage Increase in Annual Allowances	Average Annual Allowances
	No.	Annual Allowances	No.	Annual Allowances	No.	Annual Allowances		
6-30-96	67	\$ 1,402,000	56	\$ 660,000	1,502	\$ 26,379,000	4.9%	\$ 17,563
6-30-97	56	1,050,000	37	487,000	1,521	27,581,000	4.6	18,133
6-30-98	54	1,064,000	43	477,000	1,532	28,675,000	4.0	18,717
6-30-99	64	1,840,000	28	551,000	1,568	30,233,000	5.4	19,281
6-30-00	95	2,364,000	71	1,167,000	1,592	34,583,000	14.4	21,723
6-30-01	127	3,581,000	47	775,000	1,672	38,347,000	10.9	22,935

SOLVENCY TEST AND ANALYSIS OF FINANCIAL EXPERIENCE *July 1, 2001*

SOLVENCY TEST *(dollars in thousands)*

Valuation Date	Actuarial Accrued Liability for				Percentage of Actuarial		
	Active Member Contributions	Retirees, Beneficiaries and Vested Participants	Active Participants (City-Financed Portion)	Actuarial Value of Assets	Accrued Liability Covered by Assets		
		(1)	(2)		(1)	(2)	(3)
7-1-96	\$ 131,421	\$ 360,055	\$ 497,867	\$ 1,024,569	100%	100%	100%
7-1-97	156,501	383,605	588,124	1,183,817	100	100	100
7-1-98	261,186	389,700	614,957	1,347,414	100	100	100
7-1-99	324,154	424,990	721,453	1,538,487	100	100	100
7-1-00	376,688	438,303	774,359	1,726,302	100	100	100
7-1-01	374,918	555,332	720,560	1,863,098	100	100	100

ANALYSIS OF FINANCIAL EXPERIENCE *(dollars in thousands)*

	Year Ended June 30, 1997	Year Ended June 30, 1998	Year Ended June 30, 1999	Year Ended July 1, 2000	Year Ended July 1, 2001
Gain (or Loss) During Year From Financial Experience:					
From Liability Sources	\$ (6,027)	\$ (9,126)	\$ (30,772)	\$ 21,667	\$ (9,353)
From Asset Sources	30,894	7,467	(11,189)	3,920	(35,515)
Total	24,867	(1,659)	(41,961)	25,587	(44,868)
Non-Recurring Items*	0	(11,082)	(57,642)	(15,950)	68,166
Composite Gain (or Loss) During Year	\$ 24,867	\$ (12,741)	\$ (99,603)	\$ 9,637	\$ 23,298

* Non-recurring items reflect changes in actuarial assumptions, methods and plan provisions.

SUMMARY OF PLAN PROVISIONS *July 1, 2001*

MEMBERSHIP

Any firefighter who has not reached the age of 36 at the time he or she first enters employment shall automatically become a participant in the Fund upon completing the training period. Before October 1, 1990, the eligibility age was 31.

AVERAGE MONTHLY SALARY

The average of the highest 36 months of salary (or 78 pay periods), including base pay and overtime, before reduction for pre-tax employee contributions and salary deferrals.

SERVICE PENSION

Eligibility — 20 years of service.

Benefit

- For retirement on or after November 1, 1997, 50% of average monthly salary, plus 3% of average monthly salary per year of service in excess of 20 years.
- For retirement on or after November 1, 1996, and prior to November 1, 1997, 48.334% of average monthly salary, plus 2.834% of average monthly salary per year of service in excess of 20 years.
- For retirement on or after November 1, 1995, and prior to November 1, 1996, 46.667% of average monthly salary, plus 2.667% of average monthly salary per year of service in excess of 20 years.
- For retirement on or after September 1, 1991, and prior to November 1, 1995, 45% of average monthly salary, plus 2.5% of average monthly salary per year of service in excess of 20 years, up to 30 years, plus 1% of average monthly salary in excess of 30 years.
- For retirement on or after September 1, 1989, and prior to September 1, 1991, 45% of average monthly salary, plus 2.5% of average monthly salary per year of service in excess of 20 years.
- For retirement on or after September 1, 1987, and prior to September 1, 1989, 45% of average monthly salary, plus 2% of average monthly salary per year of service in excess of 20 years.
- For retirement on or after July 1, 1986, and prior to September 1, 1987, 40% of average monthly salary, plus 2% of average monthly salary per year of service in excess of 20 years.

- For retirement on or after January 1, 1970, and prior to July 1, 1986, 35% of average monthly salary, plus 3% of average monthly salary per year of service in excess of 20 years, up to 25 years, plus 1% of average salary in excess of 25 years.

Maximum

- For retirement on or after September 1, 1991, 80% of average monthly salary.
- For retirement on or after September 1, 1989, and prior to September 1, 1991, 70% of average monthly salary.
- For retirement on or after September 1, 1987, and prior to September 1, 1989, 65% of average monthly salary.
- For retirements on or after January 1, 1970, and prior to September 1, 1987, 60% of average monthly salary.

ANNUAL SUPPLEMENTAL BENEFIT

Supplemental benefit payments totaling \$5 million will be payable each January to eligible retirees and survivors in accordance with guidelines determined by the Board of Trustees.

DEFERRED RETIREMENT OPTION PLAN (DROP)

Eligibility — 20 years of service.

Benefit — Effective July 1, 2000, eligible participants may elect to participate in the DROP for up to 10 years. The member's service pension will be calculated based on service and earnings at the time the DROP is elected.

A notional account will be maintained for each DROP participant. This account will be credited with the following amounts while the member is a participant of the DROP:

- The member's monthly retirement pension, including applicable cost-of-living adjustments;
- The member's contribution to the Fund; and
- Investment earnings/losses at the rate of the Fund's earnings/losses averaged over a five-year period.

A benefit equal to the DROP account balance would be available at the time the member leaves active service. The payment would be made as a single lump sum or as partial withdrawals.

SUMMARY OF PLAN PROVISIONS *July 1, 2001 (continued)*

Effective on July 1, 2000, a three-year Back-DROP is available for all eligible participants. The DROP account would be recalculated based on what the account balance would have been had the participant elected the DROP up to three years earlier than he or she actually did. The initial DROP entry date cannot be backdated prior to September 1, 1995, or prior to 20 years of credited service, and must be on the first of the month selected.

The monthly benefit for a participant at actual retirement will increase 2% for every year of DROP participation (phased in at 0.5 percent effective September 1, 2000, and an additional 1.5 percent to be effective September 1, 2001).

If a DROP participant suffers an on-duty disability resulting in the inability to perform any gainful activity or dies in the line of duty, the death or disability annuity benefit would be calculated as though the participant had not entered the DROP. In addition, the DROP account would be payable to the participant or beneficiary.

SERVICE-CONNECTED DISABILITY PENSION

Eligibility — No age or service requirements.

Benefit — 50% of average monthly salary (occupational), or service pension if greater and eligible. Firefighters who are not capable of performing any substantial gainful activity will receive 75% of average monthly salary (general), or service pension if greater and eligible.

NON-SERVICE-CONNECTED DISABILITY PENSION

Eligibility — No age or service requirements.

Benefit — 25% of average monthly salary, plus 2.5% of average monthly salary per full year of service.

Maximum — 50% of average monthly salary, or service pension if greater and eligible.

DEFERRED VESTED PENSION

Eligibility — At least 10 but less than 20 years of service.

Benefit — 1.7% of average monthly salary per year of service, payable beginning at age 50, or optional refund of contributions with interest at a flat rate of 5% not compounded.

DEATH BENEFITS

Payable as specified below if survived by a spouse, dependent children or dependent parents. Effective November 1, 1997, dependent children can continue to receive benefits from the age of 18 through 22 if they are in college, unmarried and if an election is made by the firefighter.

- **Nonservice-connected** — Monthly benefit that would have been payable had the participant retired for nonservice-connected disability on the date of his or her death, or service pension if greater.
- **Service-connected** — 100% of average monthly salary.
- **Pre-retirement** — Refund of contributions made if no eligible survivors. If death occurs after 10 years of service, interest is credited on the contributions at the flat rate of 5%, not compounded. If death occurs before 10 years of service, no interest is credited.
- **Post-retirement** — Monthly benefit that was payable to the participant prior to his or her death. Effective July 1, 1998, a “graded” post-retirement death benefit is payable to a surviving spouse if the retiree was not married at the time of retirement. This “graded” benefit is equal to 20% of the post-retirement death benefit for each year of marriage to a maximum of 100% after five years of marriage.
- **Lump sum** — A one-time \$5,000 lump-sum death benefit for any active or retired firefighter. This benefit applies to active members, current retirees and disabled participants.

ADDITIONAL BENEFIT

Effective on or after July 1, 2001, an extra monthly benefit of \$150 is payable for life to any eligible retired member or an eligible survivor of a deceased member. This benefit is not subject to the post-retirement adjustment and is not available to deferred retirees or survivors of deferred retirees.

SUMMARY OF PLAN PROVISIONS *July 1, 2001 (continued)*

POST-RETIREMENT ADJUSTMENTS

- Prior to October 1, 1990 — Pensions adjusted each year based on changes in the CPI-U, but not below original amount or above original amount, increased 3% each year, not compounded.

Pension adjustments for participants who retire after March 1, 1982, begin at age 55.

- On or after October 1, 1990, and prior to November 1, 1997 — Pensions adjusted each year based on changes in the Consumer Price Index for All Urban Consumers (CPI-U). The adjustment is based on the amount of benefits payable at the time of adjustment. The maximum annual increase shall be 3% of the benefits payable at the time of adjustment.

Pension adjustments begin immediately for participants whose benefits become payable on or after July 1, 1986, and are based upon 30 or more years of service.

- On or after November 1, 1997 — Pensions adjusted each year at a fixed rate of 3%. The adjustment is based on the amount of benefits payable at the time of adjustment.

Pension adjustments for participants who retire with a vested benefit begin at age 48, effective October 1, 2000. Pension adjustments begin immediately for participants who become disabled and cannot perform any substantial gainful activity (current and future) and who qualify for general on-duty disability benefits.

CONTRIBUTION RATES

Members — 7.7% of salary. Refund of contributions without interest in the event of termination before 10 years of service.

City — Beginning in 1983, the rate required to fund the plan on an actuarial reserve basis. However, a minimum contribution of twice the employee contribution rate is required by the governing statute.

CONTRIBUTION REFUNDS

Members are entitled to a refund of their contributions upon separation from the Fire Department.

- Members with less than 10 years of service are entitled to a full refund of their contributions to the Fund with no interest.
- Members with at least 10 but less than 20 years of service are entitled to a full refund of their contributions, with interest at 5%, not compounded.

FORM OF PAYMENT

Normal form of payment is a single life annuity for unmarried members and an unreduced joint and survivor annuity for married members.

A more detailed description of plan provisions is available at the Houston Firefighters' Relief and Retirement Fund office.

CHANGES IN PLAN PROVISIONS SINCE THE PRIOR VALUATION

Plan provisions reflected in the July 1, 2001, valuation are the same as those in the prior valuation except for the following changes:

- The additional benefit paid to all retirees and beneficiaries increased from \$125 to \$150 per month. This benefit does not increase with COLA (effective July 1, 2001).
- The participant's monthly benefit at actual retirement is increased from 1% to 2% for every year of DROP participation. The additional benefit accrual is applied to his or her original annuity upon actual retirement, but not added to payments into the DROP account (to be effective September 1, 2001).



Section 5
Statistical Information (unaudited)

STATISTICAL
INFORMATION (unaudited)



Fiscal Year Ended June 30, 2004

STATISTICS

REVENUES BY SOURCE (dollars in thousands) — ACCRUAL BASIS

Fiscal Year Ended June 30,	Employee Contributions	Employer Contributions	Employer Contributions as a Percentage of Annual Covered Payroll	Investment Income (Loss) Based on Market Value	Total
1999	\$ 12,043	\$ 24,084	\$ 15.4	\$ 76,916	\$ 113,043
2000	12,317	24,645	15.4	159,214	196,176
2001	12,019	24,032	15.4	(24,229)	11,822
2002	14,219	28,451	15.4	(45,685)	(3,015)
2003	13,995	27,990	15.4	97,380	139,364
2004	14,238	28,477	*	304,225	346,940

* The employer contributed 15.4 percent of the firefighters' salaries during July and August 2003. Beginning September 1, 2003, the employer contributed 16.7 percent of firefighters' salaries.

Contributions were made in accordance with actuarially determined contribution requirements as adopted by the Board of Trustees.

EXPENSES BY TYPE (dollars in thousands) — ACCRUAL BASIS

Fiscal Year Ended June 30,	Benefit Payments	Professional and Administrative Expenses	Contribution Refunds	Total
1999	\$ 30,899	\$ 2,966	\$ 317	\$ 34,181
2000	35,502	3,168	187	38,857
2001	47,875	4,102	299	52,277
2002	57,820	5,309	179	63,308
2003	71,385	4,774	126	76,286
2004	83,619	5,565	97	89,281

Contributions were made in accordance with actuarially determined contribution requirements as adopted by the Board of Trustees.

STATISTICS (continued)

BENEFIT EXPENSES BY TYPE (cash basis)

Year Ending	DROP Distributions	Annual Supplemental Benefit Pmt.	Monthly Pension Benefits					Refunds of Contributions Due to		
			Service Retirees	Deferred Retirees*	On-Duty Disabilities	Off-Duty Disabilities	Survivors	Death	Termination	Total
			1999	788,368	8,000,000	17,424,507	—	2,776,862	1,605,351	5,661,787
2000	1,887,631	—	21,939,996	333,084	3,215,798	1,741,724	7,243,920	14,305	186,054	36,562,512
2001	5,426,224	4,965,820	25,398,338	367,503	3,236,816	1,623,357	7,702,694	0	152,013	48,872,765
2002	10,299,394	4,951,779	30,699,073	388,025	3,843,253	1,634,500	8,551,235	0	179,451	60,546,710
2003	17,587,240	4,971,066	36,227,547	425,491	4,170,940	1,528,181	9,250,844	0	125,824	74,287,133
2004	22,931,233	4,956,121	39,242,440	438,383	4,606,603	1,506,122	9,959,839	0	97,363	83,738,104

* Reporting of deferred retirees began in 2000.

RETIRED MEMBERS BY TYPE OF BENEFIT Year Ended June 30, 2004

Monthly Benefit Amount	Total Number of Benefit Recipients					Deferred (Receiving Benefits)	Deferred- Inactive* (Not Yet Receiving Benefits)
	Service	Disability	Widows	Children			
\$ 1 – 200	3	0	0	0	3	0	0
201 – 400	51	0	0	7	9	35	0
401 – 600	39	0	0	6	4	29	2
601 – 800	32	0	1	15	4	12	5
801 – 1,000	48	11	6	20	9	2	2
1,001 – 1,200	64	17	6	36	4	1	0
1,201 – 1,400	117	37	33	43	4	0	0
1,401 – 1,600	134	57	30	46	1	0	0
1,601 – 1,800	186	89	52	44	1	0	0
1,801 – 2,000	181	106	31	42	2	0	0
Over 2,000	1,196	944	95	155	2	0	0
Total:	2,051	1,261	254	414	43	79	9

* Deferred-inactive members are not yet included in the total columns as they are not yet receiving benefits.

STATISTICS *(continued)***AVERAGE MONTHLY BENEFIT PAYMENTS FOR SERVICE RETIREMENTS**

Retirement Effective Dates July 1, 1998 Through June 30, 2004	Years of Credited Service		
	20 – 25	26 – 30	Over 30
Period 7-1-98 through 6-30-99*			
Number of Service Retirements	6	11	7
Average Monthly Benefit	\$1,808	\$2,647	\$3,308
Period 7-1-99 through 6-30-00			
Number of Service Retirements	18	15	11
Average Monthly Benefit	2,000	3,016	3,549
Period 7-1-00 through 6-30-01			
Number of Service Retirements	22	32	36
Average Monthly Benefit	1,999	2,295	3,159
Period 7-1-01 through 6-30-02			
Number of Service Retirements	17	33	64
Average Monthly Benefit	2,304	2,577	3,584
Period 7-1-02 through 6-30-03			
Number of Service Retirements	40	43	65
Average Monthly Benefit	2,438	2,527	3,556
Period 7-1-03 through 6-30-04			
Number of Service Retirements	35	28	71
Average Monthly Benefit	2,611	2,667	3,664
Summary			
Period 7-1-98 through 6-30-04			
Number of Service Retirements	138	162	254
Average Monthly Benefit	\$2,193	\$2,622	\$3,470

* Reflects amended numbers

GLOSSARY

Some of these terms are used in the Investment Section, beginning on page 24. Others are used throughout this report. Definitions are provided as they relate to the Houston Firefighters' Relief and Retirement Fund.

Accrual Basis of Accounting

Accounting method in which income and expense transactions are recognized when they are earned or incurred rather than when they are settled. The Fund uses this method of accounting.

Asset

Anything having commercial or exchange value that is owned by the Fund.

Book Value

The value (cost) at which an asset is carried on a balance sheet.

Cash Basis of Accounting

Accounting method in which revenue and expense transactions are recognized when they are paid for (settled), rather than when they are incurred.

Compound or Compounding

The process of calculating and adding current interest to the principal and interest of a previous period(s). For example, compound interest is the interest earned on the principal plus interest earned earlier. If \$100 is deposited in a bank account that earns 10 percent interest, the account will have \$110 at the end of the first year and \$121 at the end of the second year. The extra \$1, earned on the \$10 interest from the first year, is the compound interest. This example assumes interest is compounded annually. Interest can also be compounded on a daily, quarterly or other-time basis.

Compound Return

Profit on an investment, usually expressed as an annual percentage rate.

Diversification

Spreading of risk by putting assets in several different categories of investments, such as stocks, bonds, cash, high-yield and alternatives. Further diversification is accomplished by using different investment managers with different management styles within each category.

Fund Equity (Stock) Investments

The portion of the total Fund that is invested in ownership interest in corporations, usually in common stock.

Fund Fixed-Income (Bond) Investments

The portion of the total Fund that is invested in debt instruments that usually pay a fixed rate of interest or dividends over a specified period of time — for example, corporate or government bonds.

Institutional Investor Organization

An organization that invests and trades large volumes of securities (stocks and bonds). Some examples are retirement funds, insurance companies, banks, mutual funds and college endowment funds. Typically, between 50 percent and 70 percent of the daily trading at the New York Stock Exchange is on behalf of institutional investors across the country. The Fund is an institutional investor.

The Lehman Universal Index

The union of the Lehman Aggregate Index, the Lehman U.S. High Yield Index, the Lehman 144-A Index, the Lehman Eurodollar Index and the Lehman Emerging Markets Index. The Aggregate Index covers the U.S. investment-grade, fixed-rate market and includes government and corporate bonds, agency mortgage pass-through securities and asset-backed issues. The High Yield Index covers the universe of dollar-denominated, fixed-rate noninvestment-grade debt. The 144-A Index includes fixed-rate, investment-grade, non-convertible, dollar-denominated securities issued under Rule 144-A. The Eurodollar Index encompasses non-SEC registered, as well as global investment-grade, fixed-rate U.S. dollar-denominated issues. The Emerging Markets index includes dollar-denominated local, corporate, sovereign and Brady bonds of emerging-market countries.

Liability

Any debt of the Fund giving a creditor a claim on the assets of the Fund (i.e., the money has not yet been paid, but the event causing the obligation has already occurred).

Market Value

Estimated selling price of an asset on the open market at a specified point in time.

Mean Return

The average return.

Median Return

The midpoint return when all returns are ranked from highest to lowest — and there is an equal number of returns above and below.

Median Total Fund Return

The midpoint return for all assets in all plans in a universe of plans.

Merrill Lynch 90-Day Treasury Bill Index

Generally accepted as a proxy for the return on a risk-free asset, this index links the monthly returns for 90-day U.S. Treasury Bills.

GLOSSARY *(continued)*

MSCI All Country World Ex-US Index

MSCI (Morgan Stanley Capital International) has 51 country indices and several regional indices, which are formed by aggregating the country indices. MSCI All Country World Ex-US Index includes all countries excluding the United States. MSCI equity indices are constructed in a consistent manner across all countries, encompassing a total of 23 developed markets and 28 emerging markets. The consistent approach to index construction ensures the proper representation of the countries' underlying industry distribution and market capitalization, and allows investors to accurately compare equity performance across the markets, regions and sectors. MSCI calculates indices by applying full market capitalization weights (price multiplied by the number of shares outstanding) for the constituent securities. MSCI calculates regional indices using GDP weightings for countries.

Portfolio

Combined holding of more than one stock, bond or other asset by an individual or institutional investor.

Portfolio Management

The process of selecting, monitoring and changing assets within a portfolio or account to meet defined investment objectives. For the Fund, this management approach describes a universe of assets, determines how assets are to be distributed among security types such as stocks and bonds, and determines a risk/return relationship for investments.

Receivables

Assets to which the Fund is entitled — but has not received.

Russell 3000 Stock Index

Measures the performance of the 3,000 largest U.S. companies based on total market capitalization, which represents approximately 8 percent of the investable U.S. equity market. The Russell 3000 Stock Index is comprised of stocks within the Russell 1000 and the Russell 2000 indices.

SEI

A service used by the Fund from fiscal year 1978 to 1988 to measure total Fund investment return against a universe of other funds that maintains similar investment portfolios. SEI maintains a database of investment portfolio returns for corporate, public, multi-employer and foundation investment portfolios.

Standard Deviation

A statistical measure of the degree to which an individual value in a probability distribution tends to vary from the mean of the distribution. Standard deviation quantifies the relationship between risk and return, and is often applied in modern portfolio management.

Total Fund

All the investments of the Fund, including stocks, bonds, cash equivalents, high-yield bonds and alternative investments.

Trust Universe Comparison Service (TUCS)

A service used by the Fund starting in fiscal year 1989 to measure the total Fund investment return against a universe of other funds with similar investment portfolios. TUCS maintains a database of investment portfolio returns for hundreds of corporate, public, multi-employer and foundation investment portfolios.

Universe

A total number of facts or events to which a specific fact or event is compared. For example, a database of investment portfolio returns of organizations, like the Fund, can be used to compare investment performance.

Houston Firefighters'
Relief and Retirement Fund



*Investing for Firefighters
and Their Families.®*

4225 Interwood N. Parkway
Houston, Texas 77032-3866
281.372.5100 Tel
281.372.5101 Fax
1.800.666.9737
www.hfrf.org